



[Go to Product page](#)

Datasheet for ABIN361192

anti-CST3 antibody (Internal Region)

2 Images

Overview

Quantity:	100 µg
Target:	CST3
Binding Specificity:	Internal Region
Reactivity:	Human
Host:	Goat
Clonality:	Polyclonal
Conjugate:	This CST3 antibody is un-conjugated
Application:	Western Blotting (WB), ELISA

Product Details

Purpose:	CST3 / cystatin C
Immunogen:	Peptide with sequence C-SVEEEGVRRALD, from the internal region of the protein sequence according to NP_000090.1.
Sequence:	SVEEEGVRRALD
Isotype:	IgG
Cross-Reactivity:	Human
Purification:	Purified from goat serum by ammonium sulphate precipitation followed by antigen affinity chromatography using the immunizing peptide.
Grade:	Verified

Target Details

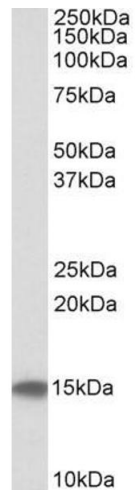
Target:	CST3
Alternative Name:	CST3 (CST3 Products)
Background:	CST3, cystatin C, ARMD11, MGC117328, OTTHUMP00000030440, OTTHUMP00000164181, OTTHUMP00000164182, bA218C14.4 (cystatin C), cystatin 3, cystatin C (amyloid angiopathy and cerebral hemorrhage), gamma-trace, neuroendocrine basic polypeptide, post-gamma-globul
Gene ID:	1471
NCBI Accession:	NP_000090

Application Details

Application Notes:	Western Blot: Approx. 15 kDa band observed in Human Testis and Prostate lysates (calculated MW of 15.8 kDa according to NP_000090.1). Recommended concentration: 0.3-1 µg/mL. Peptide ELISA: antibody detection limit dilution 1:32000.
Restrictions:	For Research Use only

Handling

Format:	Liquid
Concentration:	0.5 mg/mL
Buffer:	Supplied at 0.5 mg/mL in Tris saline, 0.02 % sodium azide, pH 7.3 with 0.5 % bovine serum albumin.
Preservative:	Sodium azide
Precaution of Use:	This product contains Sodium azide: a POISONOUS AND HAZARDOUS SUBSTANCE which should be handled by trained staff only.
Handling Advice:	Minimize freezing and thawing.
Storage:	-20 °C
Storage Comment:	Aliquot and store at -20°C, with minimal freeze/thawing. A working aliquot may be refrigerated at 4°C for a few weeks and still remain viable.



Western Blotting

Image 1. ABIN361192 (0.1µg/ml) staining of Human Testis lysate (35µg protein in RIPA buffer). Primary incubation was 1 hour. Detected by chemiluminescence

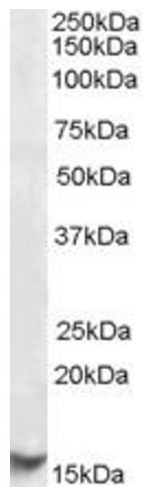


Image 2. EB09287 (1µg/ml) staining of Human Testis lysate (35µg protein in RIPA buffer). Primary incubation was 1 hour. Detected by chemiluminescence