



[Go to Product page](#)

Datasheet for ABIN361194

anti-IFT57 antibody (Internal Region)

1 Image

Overview

Quantity:	100 µg
Target:	IFT57
Binding Specificity:	Internal Region
Reactivity:	Human, Mouse
Host:	Goat
Clonality:	Polyclonal
Conjugate:	This IFT57 antibody is un-conjugated
Application:	Western Blotting (WB), Immunohistochemistry (IHC), ELISA

Product Details

Purpose:	HIPPI
Immunogen:	Peptide with sequence C-EQPQEYDDPNATISN , from the internal region of the protein sequence according to NP_060480.1.
Sequence:	EQPQEYDDPN ATISN
Isotype:	IgG
Cross-Reactivity:	Cow, Human, Mouse, Rat
Purification:	Purified from goat serum by ammonium sulphate precipitation followed by antigen affinity chromatography using the immunizing peptide.
Grade:	Verified

Target Details

Target:	IFT57
Alternative Name:	IFT57 (IFT57 Products)
Background:	IFT57, intraflagellar transport 57 homolog (Chlamydomonas), ESRRBL1, FLJ10147, HIPPI, MHS4R2, HIP1 protein interactor, estrogen-related receptor beta like 1, huntingtin interacting protein-1 interacting protein
Gene ID:	55081, 73916, 303968
NCBI Accession:	NP_060480
Pathways:	Hedgehog Signaling , Positive Regulation of Endopeptidase Activity

Application Details

Application Notes:	Immunohistochemistry: Paraffin embedded Human Testis. Recommended concentration: 5 μ g/mL. Western Blot: Approx 49 kDa band observed in Human and Mouse Brain lysates (calculated MW of 49.1 kDa according to Human NP_060480.1 and of 48.8 kDa according to Mouse NP_082956.2). Recommended concentration: 1-3 μ g/mL. Peptide ELISA: antibody detection limit dilution 1:8000.
Restrictions:	For Research Use only

Handling

Format:	Liquid
Concentration:	0.5 mg/mL
Buffer:	Supplied at 0.5 mg/mL in Tris saline, 0.02 % sodium azide, pH 7.3 with 0.5 % bovine serum albumin.
Preservative:	Sodium azide
Precaution of Use:	This product contains Sodium azide: a POISONOUS AND HAZARDOUS SUBSTANCE which should be handled by trained staff only.
Handling Advice:	Minimize freezing and thawing.
Storage:	-20 °C
Storage Comment:	Aliquot and store at -20°C, with minimal freeze/thawing. A working aliquot may be refrigerated at 4°C for a few weeks and still remain viable.

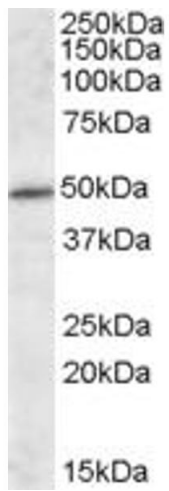


Image 1. EB09292 (1µg/ml) staining of Mouse Brain lysate (35µg protein in RIPA buffer). Primary incubation was 1 hour. Detected by chemiluminescence.