

Datasheet for ABIN361195

anti-SCARB2 antibody (Internal Region)**2** Images**1** Publication[Go to Product page](#)

Overview

Quantity:	100 µg
Target:	SCARB2
Binding Specificity:	Internal Region
Reactivity:	Human
Host:	Goat
Clonality:	Polyclonal
Conjugate:	This SCARB2 antibody is un-conjugated
Application:	Western Blotting (WB), ELISA, Immunohistochemistry (IHC)

Product Details

Purpose:	LIMP2 / SCARB2
Immunogen:	Peptide with sequence C-NKANIQFGDNGTTIS, from the internal region of the protein sequence according to NP_005497.1.
Sequence:	NKANIQFGDN GTTIS
Isotype:	IgG
Specificity:	This antibody is expected to recognize reported isoform 1 (NP_005497.1) only.
Cross-Reactivity:	Human, Mouse
Purification:	Purified from goat serum by ammonium sulphate precipitation followed by antigen affinity chromatography using the immunizing peptide.
Grade:	Verified

Target Details

Target:	SCARB2
Alternative Name:	SCARB2 (SCARB2 Products)
Background:	SCARB2, scavenger receptor class B, member 2, AMRF, CD36L2, HLGP85, LIMPII, 85 kDa lysosomal sialoglycoprotein scavenger receptor class B, member 2, CD36 antigen (collagen type I receptor, thrombospondin receptor)-like 2 (lysosomal integral membrane prote
Gene ID:	950, 12492
NCBI Accession:	NP_005497

Application Details

Application Notes:	Immunohistochemistry: In paraffin embedded Human Cerebral Cortex shows lysosomal staining. Recommended concentration, 3-5 µg/mL. Western Blot: Approx. 80 kDa band observed in Human Brain (Cortex and Cerebellum) lysates (calculated MW of 54.3 kDa according to NP_005497.1). The observed molecular weight corresponds to earlier findings in literature with different antibodies (Fujita et Peptide ELISA: antibody detection limit dilution 1:4000.
Restrictions:	For Research Use only

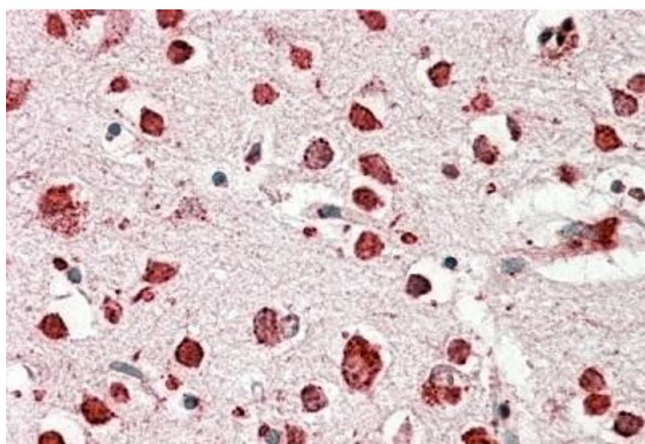
Handling

Format:	Liquid
Concentration:	0.5 mg/mL
Buffer:	Supplied at 0.5 mg/mL in Tris saline, 0.02 % sodium azide, pH 7.3 with 0.5 % bovine serum albumin.
Preservative:	Sodium azide
Precaution of Use:	This product contains Sodium azide: a POISONOUS AND HAZARDOUS SUBSTANCE which should be handled by trained staff only.
Handling Advice:	Minimize freezing and thawing.
Storage:	-20 °C
Storage Comment:	Aliquot and store at -20°C, with minimal freeze/thawing. A working aliquot may be refrigerated at 4°C for a few weeks and still remain viable.

Publications

Product cited in: Murphy, Gysbers, Abbott, Tayebi, Kim, Sidransky, Cooper, Garner, Halliday: "Reduced glucocerebrosidase is associated with increased α -synuclein in sporadic Parkinson's disease." in: **Brain : a journal of neurology**, Vol. 137, Issue Pt 3, pp. 834-48, (2014) ([PubMed](#)).

Images



Immunohistochemistry

Image 1. ABIN361195 (3.8 μ g/mL) staining of paraffin embedded Human Cerebral Cortex. Steamed antigen retrieval with citrate buffer pH 6, AP-staining.



Western Blotting

Image 2. ABIN361195 (0.1 μ g/mL) staining of Human Cerebral Cortex lysate (35 μ g protein in RIPA buffer). Primary incubation was 1 hour. Detected by chemiluminescence.