

## Datasheet for ABIN361350

**anti-NEFH antibody**

## 3 Images

[Go to Product page](#)

## Overview

Quantity:	100 µL
Target:	NEFH
Reactivity:	Cow
Host:	Mouse
Clonality:	Monoclonal
Conjugate:	This NEFH antibody is un-conjugated
Application:	Western Blotting (WB), Immunofluorescence (IF)

## Product Details

Immunogen:	Purified bovine NF-H
Clone:	NAP4
Isotype:	IgG1
Specificity:	Specific for the ~200k Neurofilament H protein. It recognizes phosphorylated NF-H KSP (lysine-serine-proline) type sequences. In some species there is some cross-reactivity with the related phosphorylated KSP sequences found in the related neurofilament subunit NF-M. It recognizes neurofilaments in frozen sections in tissue culture and in formalin fixed sections.
Cross-Reactivity:	Chicken, Mammalian
Purification:	Protein G purified culture supernatant

## Target Details

Target:	NEFH
---------	------

## Target Details

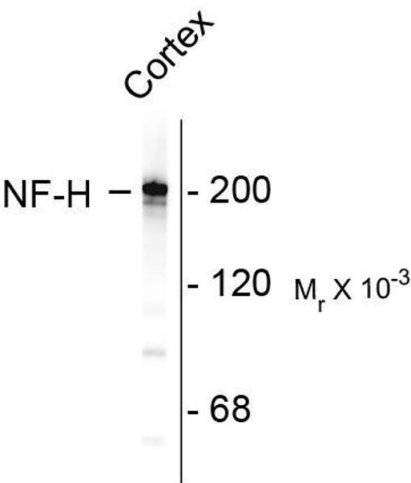
Alternative Name:	NEFH ( <a href="#">NEFH Products</a> )
Background:	Neurofilaments are the 10nm or intermediate filament proteins found specifically in neurons, and are composed predominantly of three major proteins called NF-L, NF-M and NF-H (1). NF-H is the neurofilament high or heavy molecular weight polypeptide and runs on SDS-PAGE gels at 200-220 kDa, with some variability across species boundaries. Antibodies to NF-H are useful for identifying neuronal cells and their processes in tissue sections and in tissue culture. NF-H antibodies can also be useful to visualize neurofilament accumulations seen in many neurological diseases, such as Amyotrophic Lateral Sclerosis (Lou Gehrig's disease) (2) and Alzheimer's disease (3). Anti-Neurofilament H Western blot of rat cortex lysate showing specific immunolableing of the ~ 200k NF-H protein.
Molecular Weight:	'200 kDa
Gene ID:	4744
UniProt:	<a href="#">P12036</a>

## Application Details

Application Notes:	Recommended Dilution: WB: 1:5,000 IF: 1:500 Quality Control: Western blots performed on each lot.
Restrictions:	For Research Use only

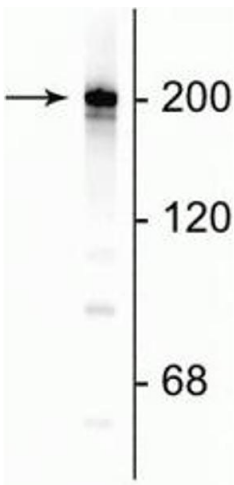
## Handling

Format:	Liquid
Buffer:	total IgG fraction + 10 mM Sodium azide.
Preservative:	Sodium azide
Precaution of Use:	This product contains Sodium azide: a POISONOUS AND HAZARDOUS SUBSTANCE which should be handled by trained staff only.
Storage:	-20 °C



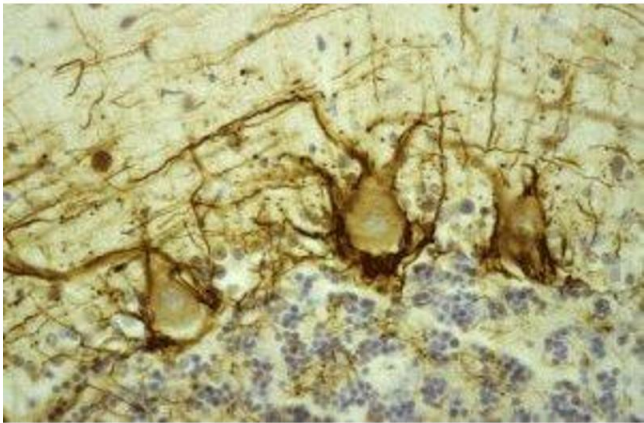
Western Blotting

**Image 1.** Western blots of rat cortex lysate showing specific immunolabeling of the ~ 200k NF-H protein.



Western Blotting

**Image 2.** Western blot of rat cortical lysate showing specific immunolabeling of the ~200 kDa NF-H protein.



Immunostaining

**Image 3.** Immunostaining of human cerebellar cortex showing labeling of NF-H (brown) in basket cell axons surrounding the large Purkinje neurons.