

Datasheet for ABIN361352

anti-NEFL antibody**3** Images[Go to Product page](#)

Overview

Quantity:	100 µL
Target:	NEFL
Reactivity:	Pig
Host:	Mouse
Clonality:	Monoclonal
Conjugate:	This NEFL antibody is un-conjugated
Application:	Western Blotting (WB), Immunofluorescence (IF)

Product Details

Immunogen:	Preparation of porcine NF-L
Clone:	DA2
Isotype:	IgG1
Specificity:	Specific for the ~68k Neurofilament L protein.
Cross-Reactivity:	Chicken, Cow (Bovine), Human, Mouse (Murine), Rat (Rattus)
Purification:	Protein G purified culture supernatant

Target Details

Target:	NEFL
Alternative Name:	NEFL (NEFL Products)
Background:	Neurofilaments are the 10nm or intermediate filament proteins found specifically in neurons,

Target Details

and are composed predominantly of three major proteins called NF-L, NF-M and NF-H (1). NF-L is the neurofilament light or low molecular weight polypeptide and runs on SDS-PAGE gels at about 68kDa. Antibodies to NF-L are useful for identifying neuronal cells and their processes in tissue sections and in tissue culture. Mutations in the protein coding region of the human NF-L gene cause some forms of Charcot-Marie-Tooth disease (2). Anti-Neurofilament L Western blot of rat cortex lysate showing specific immunolabeling of the ~ 68k NF-L protein.

Molecular Weight: 68 kDa

Gene ID: 4747

UniProt: [P02547](#)

Application Details

Application Notes: Recommended Dilution: WB: 1:1,000 IF: 1:100 Quality Control: Western blots performed on each lot.

Restrictions: For Research Use only

Handling

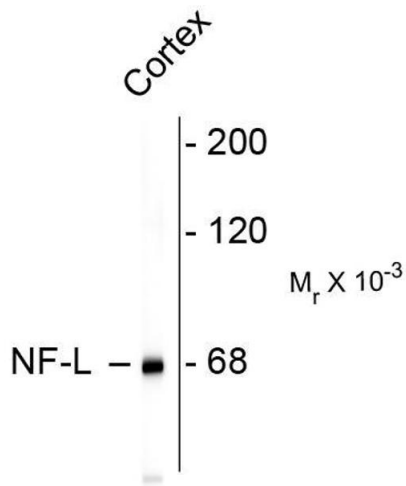
Format: Liquid

Buffer: total IgG fraction + 10 mM Sodium azide.

Preservative: Sodium azide

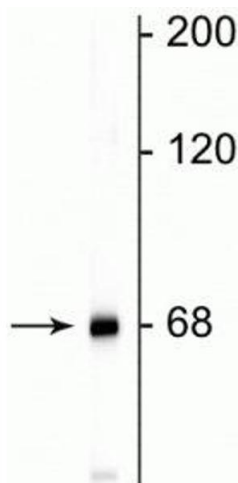
Precaution of Use: This product contains Sodium azide: a POISONOUS AND HAZARDOUS SUBSTANCE which should be handled by trained staff only.

Storage: -20 °C



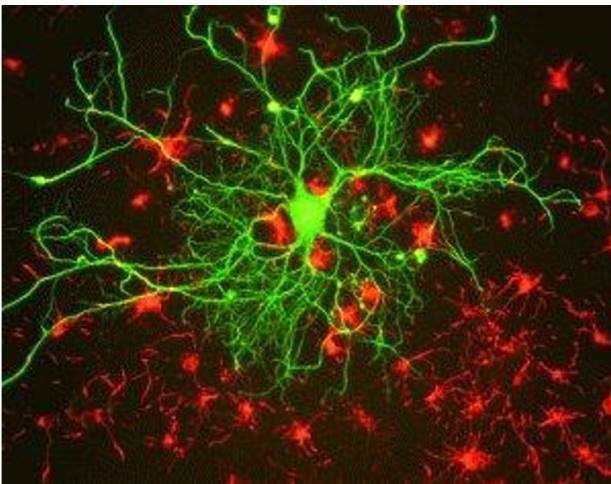
Western Blotting

Image 1. Western blots of rat cortex lysate showing specific immunolabeling of the ~ 68k NF-L protein.



Western Blotting

Image 2. Western blot of rat cortical lysate showing specific immunolabeling of the ~68 kDa NF-L protein.



Immunostaining

Image 3. Immunostaining of cultured rat neurons with anti-mouse neurofilament L (green) and anti-rabbit alpha internexin.