

Datasheet for ABIN361363
anti-Peripherin antibody

3 Images

[Go to Product page](#)

Overview

Quantity:	100 µL
Target:	Peripherin (PRPH)
Reactivity:	Rat
Host:	Mouse
Clonality:	Monoclonal
Conjugate:	This Peripherin antibody is un-conjugated
Application:	Western Blotting (WB), Immunofluorescence (IF)

Product Details

Immunogen:	Recombinant rat peripherin expressed in and purified from E. coli
Clone:	7C5
Isotype:	IgG1
Specificity:	Specific for the ~57kDa peripherin protein. This antibody performs well on aldehyde fixed tissues.
Cross-Reactivity:	Human, Mouse (Murine), Rat (Rattus)
Predicted Reactivity:	most mammalian
Purification:	Protein G purified culture supernatant

Target Details

Target:	Peripherin (PRPH)
---------	-------------------

Target Details

Alternative Name: PRPH ([PRPH Products](#))

Background: Peripherin is a ~57kDa intermediate filament subunit found initially in sensory neurons of the peripheral nervous systems, which gives the protein its name. Subsequently, peripherin was found in some sensory and other neurons of the central nervous system and also in PC12 cells. Peripherin is also expressed in certain neuroendocrine tumors and in the insulin producing cells of the pancreas. Peripherin belongs to the Class III family of intermediate filament subunits which also includes vimentin, glial fibrillary acidic protein (GFAP) and desmin. In contrast to the neurofilaments, peripherin is strongly up-regulated after nerve injury (1). Antibodies to peripherin can be used in identifying, classifying, and studying neurons throughout the nervous system. Peripherin is also a good diagnostic marker for ballooned axons seen in Lou Gehrig's disease (Amyotrophic lateral sclerosis) and some neuronally derived tumors (2). Autoantibodies to peripherin are frequently seen in the sera of patients with diabetes (3). Peripherin is not related to peripherin/RDS, a protein of the photoreceptor outer membrane mutations of which are causative of certain forms of slow retinal degeneration. Anti-Peripherin Western blot of rat cerebellar lysate showing specific immunolabeling of the ~ 57k peripherin protein.

Molecular Weight: '57 kDa

Gene ID: 3414

UniProt: [P21807](#)

Application Details

Application Notes: Recommended Dilution: WB:1:1,000 IF: 1:200 Quality Control: Western blots performed on each lot.

Restrictions: For Research Use only

Handling

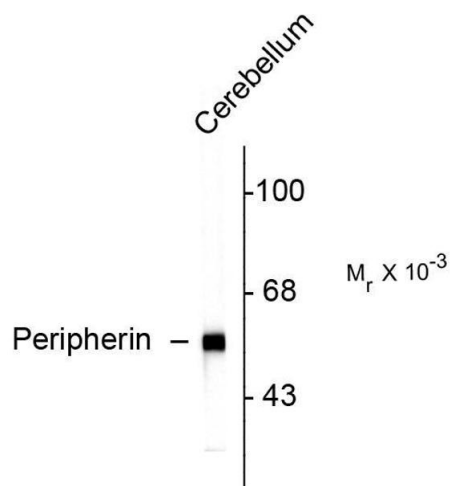
Format: Liquid

Buffer: total IgG fraction + 10 mM Sodium azide.

Preservative: Sodium azide

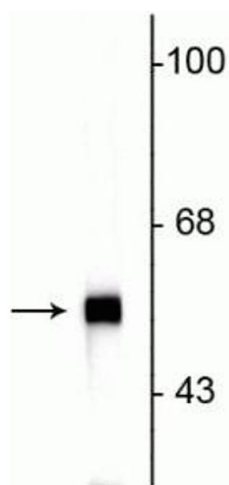
Precaution of Use: This product contains Sodium azide: a POISONOUS AND HAZARDOUS SUBSTANCE which should be handled by trained staff only.

Storage: -20 °C



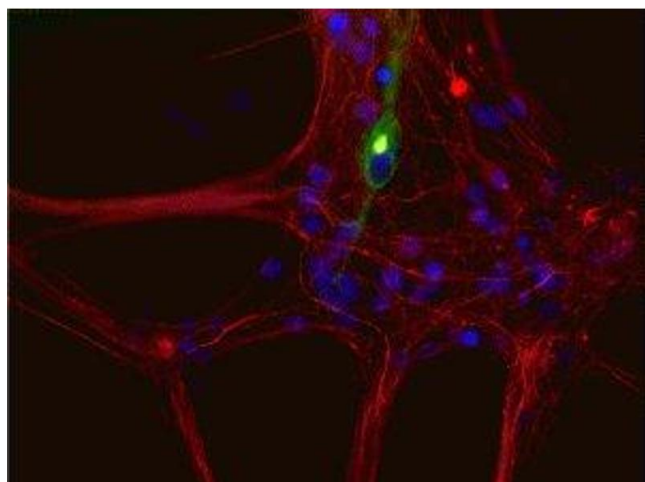
Western Blotting

Image 1. Western blots of rat cerebellar lysate showing specific immunolabeling of the ~ 57k peripherin protein.



Western Blotting

Image 2. Western blot of rat cerebellar lysate showing specific immunolabeling of the ~57 kDa peripherin protein.



Immunostaining

Image 3. Immunostaining of cultured newborn rat neurons and glia showing peripherin in green and neurofilament L in red.