

Datasheet for ABIN361370  
**anti-UCHL1 antibody**

3 Images



[Go to Product page](#)

## Overview

Quantity:	100 µL
Target:	UCHL1
Reactivity:	Human
Host:	Chicken
Clonality:	Polyclonal
Conjugate:	This UCHL1 antibody is un-conjugated
Application:	Western Blotting (WB), Immunofluorescence (IF)

## Product Details

Immunogen:	Recombinant full length human UCHL1 purified from E. coli
Specificity:	Specific for the ~24kDa UCHL1 protein. It is expected that it will work on other mammalian tissues.
Cross-Reactivity:	Cow (Bovine), Human, Mouse (Murine), Rat (Rattus)
Predicted Reactivity:	most mammalian
Purification:	Total IgY fraction

## Target Details

Target:	UCHL1
Alternative Name:	UCHL1 ( <a href="#">UCHL1 Products</a> )
Background:	Ubiquitin C-terminal hydrolase 1 (UCHL1) is also known as ubiquitin carboxyl esterase L1,

## Target Details

ubiquitin thiolesterase, neuron-specific protein PGP9.5 and Park5. It was originally identified as a major component of the neuronal cytoplasm from 2-dimensional gel analysis of brain tissues, and was given the name PGP9.5 (1). It was later found that ubiquitin C-terminal hydrolase enzyme activity was associated with the PGP9.5 protein (2). The ubiquitin C-terminal hydrolases cleave ubiquitin from other molecules. Regulation of the ubiquitin pathway is very important and many disease states are associated with defects in this pathway. Genetic knockout of UCHL1 in mice results in a motor neuron degeneration similar to the spontaneous gracile axonal dystrophy (gad) mutant mice (3). Point mutations in the UCHL1 gene are associated with some forms of human Parkinson's disease (4). Since UCHL1 is heavily expressed in neurons, it is released in large amounts following injury or degeneration, so the detection of UCHL1 in CSF and other bodily fluids can be used as a biomarker. Anti-UCHL1

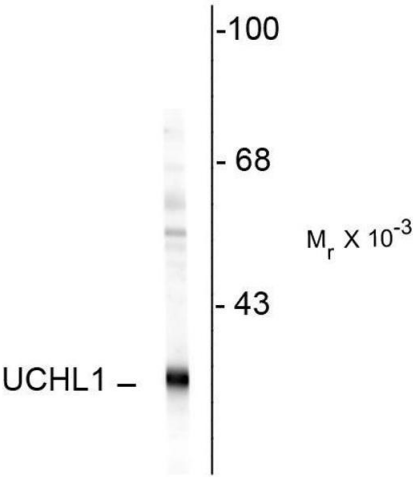
Molecular Weight:	24 kDa
Gene ID:	7365
UniProt:	<a href="#">P09936</a>
Pathways:	<a href="#">Feeding Behaviour</a>

## Application Details

Application Notes:	Recommended Dilution: WB: 1:2,500 IF: 1:500 Quality Control: Western blots performed on each lot.
Restrictions:	For Research Use only

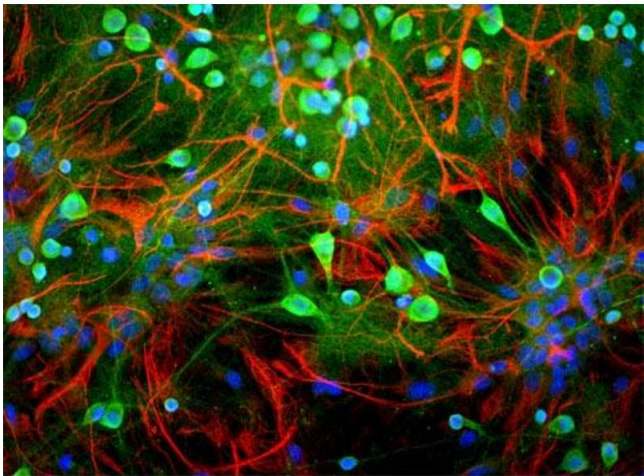
## Handling

Format:	Liquid
Buffer:	total IgY fraction in PBS + 10 mM Sodium azide.
Preservative:	Sodium azide
Precaution of Use:	This product contains Sodium azide: a POISONOUS AND HAZARDOUS SUBSTANCE which should be handled by trained staff only.
Storage:	-20 °C



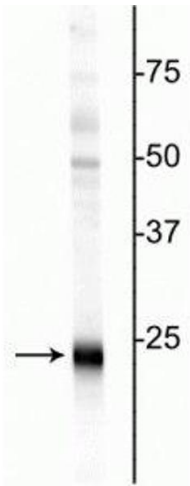
Western Blotting

**Image 1.** Western blot of rat hippocampal homogenate showing specific immunolabeling of the ~ 24k UCHL1 protein.



Immunofluorescence

**Image 2.** Rat mixed neuron/glia cultures stained with anti-UCHL1 antibody (green) and rabbit anti-GFAP antibody (620-GFAP) (red). Blue is a DNA stain.



Western Blotting

**Image 3.** Western blot of rat hippocampal homogenate showing specific immunolabeling of the ~24 kDa UCHL1 protein.