

Datasheet for ABIN361372
anti-Calretinin antibody

3 Images

[Go to Product page](#)

Overview

Quantity:	100 µL
Target:	Calretinin (CALB2)
Reactivity:	Guinea Pig
Host:	Sheep
Clonality:	Polyclonal
Conjugate:	This Calretinin antibody is un-conjugated
Application:	Western Blotting (WB), Immunohistochemistry (IHC), Immunofluorescence (IF)

Product Details

Immunogen:	Purified guinea pig calretinin
Specificity:	Specific for the ~29 kDa Calretinin protein in Western blots. The antibody also works well for immunohistochemistry on formalin or paraformaldehyde perfused rat brain tissue sections. It is expected that this antibody will also react with human, mouse , non-human primates.
Cross-Reactivity:	Rat (Rattus)
Predicted Reactivity:	human, mouse, non-human primates
Purification:	Protein A purified

Target Details

Target:	Calretinin (CALB2)
Alternative Name:	CALB2 (CALB2 Products)

Target Details

Background: Calretinin is a calcium-binding protein involved in calcium signaling. It is abundantly expressed throughout the central nervous system, retina and many other tissues. Studies have shown that calretinin may play a role in neuroprotection by buffering intracellular calcium (Lukas and Jones 1994, Weisenhorn et al., 1996). Additionally, calretinin selectively stains mesothelial cells thus making it an important marker for differentiating malignant mesothelioma from carcinomas (Attanoos et al., 2000). Anti-Calretinin Western blot of rat cerebellum (CB) lysate showing specific immunolabeling of the ~ 29k calretinin protein.

Molecular Weight: 29 kDa

Gene ID: 117059

UniProt: [P47728](#)

Application Details

Application Notes: Recommended Dilution: WB: 1:1,000 IHC: 1:500 Quality Control: Western blots performed on each lot.

Restrictions: For Research Use only

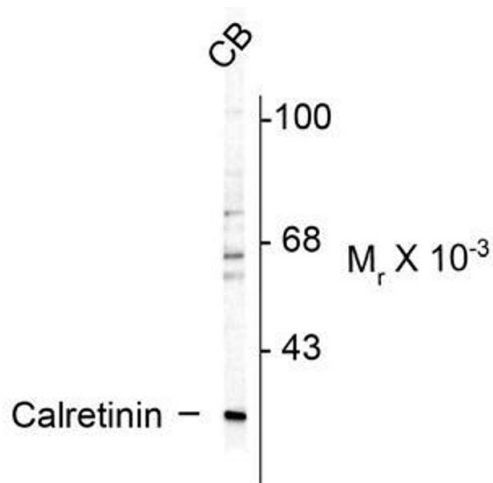
Handling

Format: Liquid

Buffer: 100 µL in 10 mM Tris, 100 mM NaCl

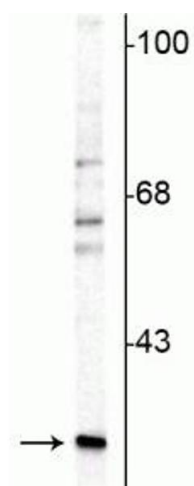
Storage: -20 °C

Images



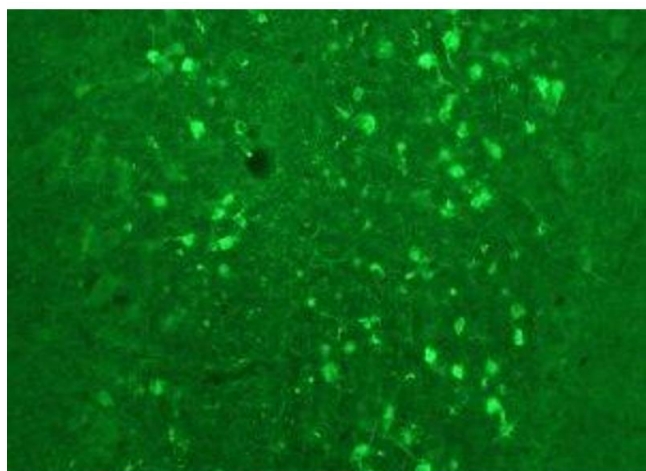
Western Blotting

Image 1. Western blots of rat cerebellum (CB) lysate showing specific immunolabeling of the ~ 29k calretinin protein.



Western Blotting

Image 2. Western blot of rat cerebellar lysate showing specific immunolabeling of the ~29 kDa calretinin protein.



Immunostaining

Image 3. Immunostaining of rat cerebellum showing fluorescence of calretinin containing cells.