

Datasheet for ABIN361373
anti-CGRP antibody



[Go to Product page](#)

1 Image

Overview

| | |
|--------------|-------------------------------------|
| Quantity: | 100 µL |
| Target: | CGRP (CALCA) |
| Reactivity: | Rat |
| Host: | Mouse |
| Clonality: | Monoclonal |
| Conjugate: | This CGRP antibody is un-conjugated |
| Application: | Immunocytochemistry (ICC) |

Product Details

| | |
|-----------------------|---|
| Immunogen: | Purified rat alpha-CGRP |
| Clone: | 4901 |
| Isotype: | IgG2a |
| Specificity: | Specific for Calcitonin Gene Related Peptide. Also recognizes rat beta-CGRP and human alpha-CGRP (10-fold less sensitivity compared to rat alpha-CGRP). Suggested positive controls are dorsal root ganglia, pancreas and gut. Notes: This antibody is an excellent tool for immunohistochemistry and for multiple labeling immunofluorescence of peripheral tissue like stomach, intestine, pancreas, sensory ganglia, and all the regions of the body that are innervated by primary afferent neurons as well as central nervous tissue. It is expected that the antibody will react with most mammals. |
| Cross-Reactivity: | Human, Rat (Rattus) |
| Predicted Reactivity: | most mammals |

Product Details

Purification: Protein G purified culture supernatant

Target Details

Target: CGRP (CALCA)

Alternative Name: CALCA ([CALCA Products](#))

Background: Calcitonin Gene Related Peptide [CGRP] is a 37 amino acid peptide and is the most potent endogenous vasodilator currently known (Brain et al.,1985). CGRP is primarily produced in nervous tissue, however, its receptors are expressed throughout the body. CGRP is also strongly implicated in the vasodilatory effect of endogenous cannabinoid anandamide in the brain. This effect was found to be antagonized by capsazepine. CGRP is also currently a major target of research in regards to factors effecting the onset of migraine headaches (Edvinsson L., 2003). CGRP antibodies have been used successfully in immunoneutralization (Wong et al., 1993)

Gene ID: 24241

UniProt: [P01256](#)

Pathways: [Hormone Activity](#), [cAMP Metabolic Process](#), [Myometrial Relaxation and Contraction](#), [Regulation of G-Protein Coupled Receptor Protein Signaling](#), [Skeletal Muscle Fiber Development](#), [Feeding Behaviour](#)

Application Details

Application Notes: Recommended Dilution: ICC: 1:50-1:100 Quality Control: ICC performed on each lot.

Restrictions: For Research Use only

Handling

Format: Liquid

Buffer: 100 µL in 10 mM HEPES (pH 7.5), 150 mM NaCl, 100 µg per ml BSA and 50 % glycerol.

Storage: -20 °C

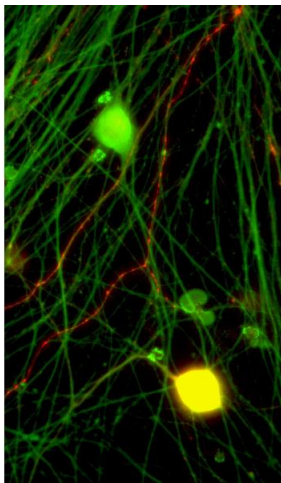


Image 1. Immunostaining of CGRP (red) in cryopreserved DRG neurons grown on coverslips. 40xmag. Green staining is PGP9.5. Yellow staining is the colocalization of CGRP and PGP9.5. Cells were obtained photo was provided courtesy of QBMCellScience.