



[Go to Product page](#)

Datasheet for ABIN361419

anti-Choline Acetyltransferase antibody

3 Images

Overview

Quantity:	100 µL
Target:	Choline Acetyltransferase (CHAT)
Reactivity:	Human
Host:	Goat
Clonality:	Polyclonal
Conjugate:	This Choline Acetyltransferase antibody is un-conjugated
Application:	Western Blotting (WB), Immunohistochemistry (IHC)

Product Details

Immunogen:	Native choline acetyltransferase purified from human placenta
Specificity:	Specific for the ~ 70k choline acetyltransferase protein
Cross-Reactivity:	Bird (Avian), Chicken, Guinea Pig, Human, Mouse (Murine), Non-Human Primate
Purification:	Affinity Purified

Target Details

Target:	Choline Acetyltransferase (CHAT)
Alternative Name:	CHAT (CHAT Products)
Background:	Choline acetyltransferase is a neuronal enzyme which catalyzes the reaction between Acetyl CoA and choline resulting in the formation of acetylcholine. It is therefore found primarily in cholinergic neurons making it a valuable marker for diseases associated with decreased cholinergic function such as Schizophrenia, Alzheimer disease (AD) and Down syndrome (Holt

Target Details

et al. 1999). Decreased choline acetyltransferase activity in particular has been shown in Schizophrenic subjects (Karson et al 1993). It has furthermore been demonstrated that in patients with AD, there are significantly lower levels of cortical ChAT that correlate with severity of the disease as measured by loss of neuropsychological function (Baskin et al. 1999). Anti-Choline Acetyltransferase Western blot of rat brain lysate showing specific immunolabeling of the ~70k ChAT

Molecular Weight: 70 kDa

Gene ID: 1103

Pathways: [Skeletal Muscle Fiber Development](#)

Application Details

Application Notes: Recommended Dilution: WB: 1:100 IHC: 1:100 Quality Control: Western blots performed on each lot.

Restrictions: For Research Use only

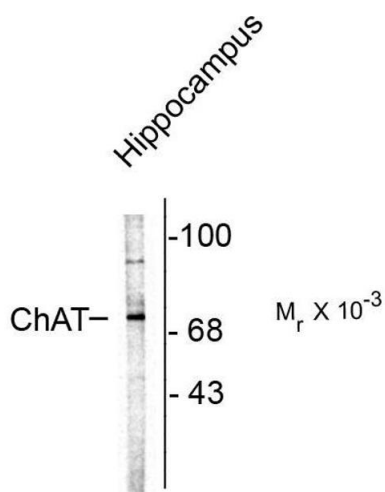
Handling

Format: Liquid

Buffer: 100 μ L in 10 mM HEPES (pH 7.5), 150 mM NaCl, 100 μ g per ml BSA and 50 % glycerol.

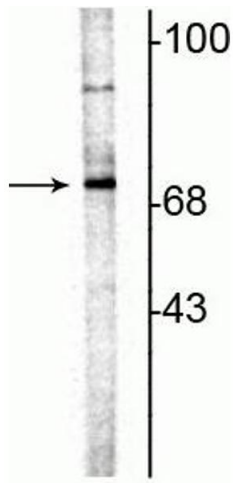
Storage: -20 $^{\circ}$ C

Images



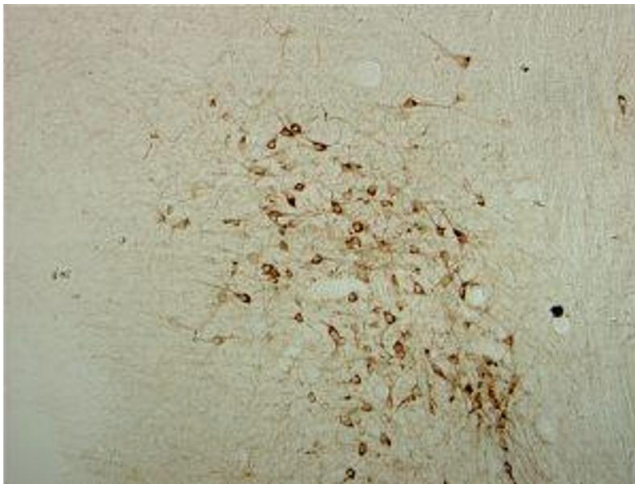
Western Blotting

Image 1. Western blots of rat brain lysate showing specific immunolabeling of the ~70k ChAT



Western Blotting

Image 2. Western blot of rat hippocampal lysate showing specific immunolabeling of the ~70 kDa ChAT.



Immunostaining

Image 3. Immunostaining of rat brainstem showing specific labeling using our anti-ChAT antibody. Image courtesy of Dr. Robert Sloviter, University of Arizona.