

Datasheet for ABIN361424

anti-DDC antibody**2** Images[Go to Product page](#)

Overview

Quantity:	100 µL
Target:	DDC
Reactivity:	Cow
Host:	Rabbit
Clonality:	Polyclonal
Conjugate:	This DDC antibody is un-conjugated
Application:	Western Blotting (WB)

Product Details

Immunogen:	SDS denatured, recombinant bovine aromatic DOPA decarboxylase expressed in E. coli and purified from inclusion bodies
Specificity:	Specific for the ~55k DDC protein.
Cross-Reactivity:	Rat (Rattus)
Predicted Reactivity:	Bovine
Purification:	Antigen Affinity Purified from Pooled Serum

Target Details

Target:	DDC
Alternative Name:	DDC (DDC Products)
Background:	DOPA decarboxylase (aromatic L-amino acid decarboxylase, AADC, DDC) catalyzes the second

Target Details

reaction in the biosynthesis of catecholamines and serotonin (Waymire and Haycock, 2002, Berry et al., 1996, Haycock et al., 2003). It is also involved in the biosynthesis of trace amines. DDC antibodies can therefore be used as markers for dopaminergic, noradrenergic and serotonergic neurons in a variety of applications including depression, schizophrenia, Parkinson's disease and drug abuse (Kish et al., 2001, Zhu et al., 2000, Zhu et al., 1999). Anti-DOPA Decarboxylase Western blot of rat adrenal medulla. As shown in the autoradiograph, the antibody is specific for the ~55k DDC protein.

Molecular Weight: 55 kDa

Gene ID: 280762

UniProt: [P27718](#)

Pathways: [Dopaminergic Neurogenesis](#)

Application Details

Application Notes: Recommended Dilution: WB: 1:1000 Quality Control: Western blots performed on each lot.

Restrictions: For Research Use only

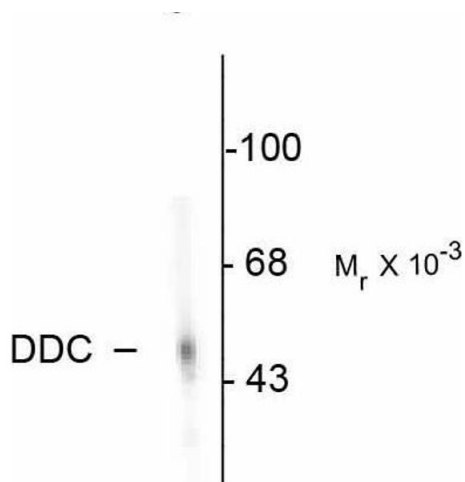
Handling

Format: Liquid

Buffer: 100 μ L in 10 mM HEPES (pH 7.5), 150 mM NaCl, 100 μ g per ml BSA and 50 % glycerol.

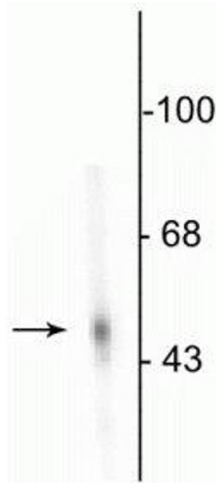
Storage: -20 $^{\circ}$ C

Images



Western Blotting

Image 1. Western blots of rat adrenal medulla. As shown in the autoradiograph, the antibody is specific for the ~55k DDC protein.



Western Blotting

Image 2. Western blot of rat adrenal medulla showing specific immunolabeling of the ~55 kDa DDC protein.