

Datasheet for ABIN361450  
**anti-SLC6A1 antibody (C-Term)**[Go to Product page](#)

## 2 Images

## Overview

Quantity:	100 µL
Target:	SLC6A1 (GAT1)
Binding Specificity:	C-Term
Reactivity:	Rat
Host:	Rabbit
Clonality:	Polyclonal
Conjugate:	This SLC6A1 antibody is un-conjugated
Application:	Western Blotting (WB), Immunohistochemistry (IHC)

## Product Details

Immunogen:	Synthetic peptide corresponding to amino acid residues from the C-terminal region conjugated to KLH
Specificity:	Specific for the ~67k GAT-1 protein. Immunolabeling is blocked by the peptide used as antigen.
Cross-Reactivity:	Mouse (Murine), Rat (Rattus)
Purification:	Affinity Purified

## Target Details

Target:	SLC6A1 (GAT1)
Alternative Name:	SLC6A1 ( <a href="#">GAT1 Products</a> )
Background:	Gamma-aminobutyric acid (GABA) is the primary inhibitory neurotransmitter in the central

## Target Details

nervous system, causing a hyperpolarization of the membrane through the opening of a Cl<sup>-</sup> channel associated with the GABAA receptor (GABAA-R) subtype. GABA plasma membrane transporters (GATs) influence synaptic neurotransmission by high-affinity uptake and release of GABA. To date, four distinct GABA transporters have been identified: GAT-1, GAT-2, GAT-3, and BGT-1. GAT-1, the most abundant of the transporters, is found predominantly in neurons, but also in some specialized glia (Minelli et al., 1995). GAT-1 is thought to play a key role in epileptogenesis (Zhao et al. 2003). Anti-GAT1 Western blot of rat hippocampal homogenate showing specific immunolabeling of the ~ 67k GAT-1 protein.

Molecular Weight:	~67 kDa
-------------------	---------

Gene ID:	79212
----------	-------

UniProt:	<a href="#">P23978</a>
----------	------------------------

## Application Details

Application Notes:	Recommended Dilution: WB: 1:1000 IHC: 1:100-1:200 Quality Control: Western blots performed on each lot.
--------------------	---------------------------------------------------------------------------------------------------------

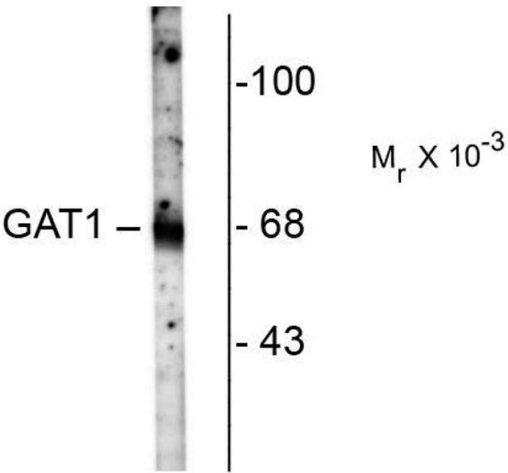
Restrictions:	For Research Use only
---------------	-----------------------

## Handling

Format:	Liquid
---------	--------

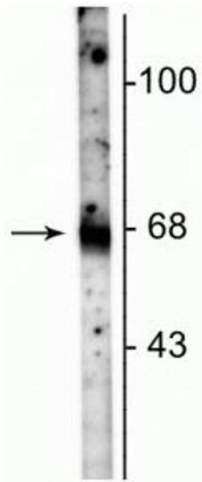
Buffer:	100 µL in 10 mM HEPES ( pH 7.5), 150 mM NaCl, 100 µg per ml BSA and 50 % glycerol.
---------	------------------------------------------------------------------------------------

Storage:	-20 °C
----------	--------



**Western Blotting**

**Image 1.** Western blots of rat hippocampal homogenate showing specific immunolabeling of the ~ 67k GAT-1 protein.



**Western Blotting**

**Image 2.** Western blot of rat hippocampal lysate showing specific immunolabeling of the ~67 kDa GAT-1 protein.