

Datasheet for ABIN361454  
**anti-mGluR2/3 antibody (C-Term)**[Go to Product page](#)

## 1 Image

## Overview

Quantity:	100 µL
Target:	mGluR2/3 (GRIA2/3)
Binding Specificity:	C-Term
Reactivity:	Rat
Host:	Rabbit
Clonality:	Polyclonal
Conjugate:	This mGluR2/3 antibody is un-conjugated
Application:	Western Blotting (WB)

## Product Details

Immunogen:	Synthetic peptide corresponding to amino acid residues from the C-terminal region conjugated to KLH
Specificity:	Specific for the ~100k GluR2/3 protein.
Cross-Reactivity:	Rat (Rattus)
Predicted Reactivity:	chicken, human, mouse, zebra fish
Purification:	Antigen Affinity Purified from Pooled Serum

## Target Details

Target:	mGluR2/3 (GRIA2/3)
Alternative Name:	GRIA2/3 ( <a href="#">GRIA2/3 Products</a> )

## Target Details

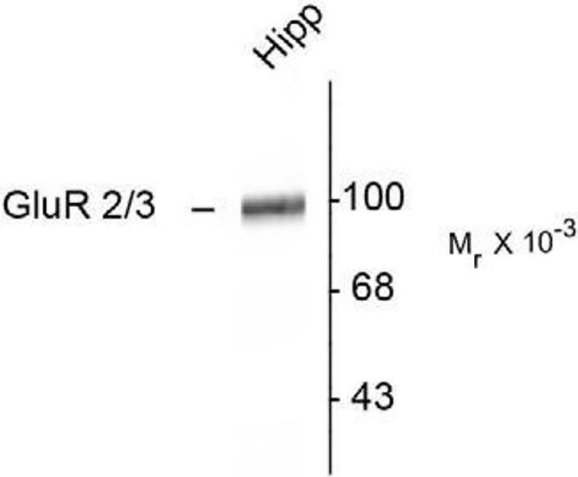
Background:	The ion channels activated by glutamate are typically divided into two classes. Those that are sensitive to N-methyl-D-aspartate (NMDA) are designated NMDA receptors (NMDAR) while those activated by (-amino-3-hydroxy-5-methyl-4-isoxalone propionic acid (AMPA) are known as AMPA receptors (AMPA). The AMPAR are comprised of four distinct glutamate receptor subunits designated (GluR1-4) and they play key roles in virtually all excitatory neurotransmission in the brain (Keinänen et al., 1990,Hollmann and Heinemann, 1994). The GluR2 subunit is widely expressed throughout the nervous system where it is thought to play key roles in synaptic plasticity and learning and memory (Duprat et al., 2003,Seidenman et al., 2003,Chung et al., 2003,Yan et al., 2002). Anti-GluR2/3 Western blot of rat hippocampal lysate showing specific immunolabeling of the ~100k GluR2/3 protein.
Molecular Weight:	'100 kDa
Gene ID:	29627
UniProt:	<a href="#">P19491</a>

## Application Details

Application Notes:	Recommended Dilution: WB: 1:1000 Quality Control: Western blots performed on each lot.
Restrictions:	For Research Use only

## Handling

Format:	Liquid
Buffer:	100 µL in 10 mM HEPES ( pH 7.5), 150 mM NaCl, 100 µg per ml BSA and 50 % glycerol.
Storage:	-20 °C



Western Blotting

**Image 1.** Western blots of rat hippocampal lysate showing specific immunolabeling of the ~100k GluR2/3 protein.