



[Go to Product page](#)

Datasheet for ABIN361468

anti-EPH Receptor B2 antibody (pTyr331)

2 Images

Overview

| | |
|----------------------|--|
| Quantity: | 100 µL |
| Target: | EPH Receptor B2 (EPHB2) |
| Binding Specificity: | pTyr331 |
| Reactivity: | Chicken |
| Host: | Rabbit |
| Clonality: | Polyclonal |
| Conjugate: | This EPH Receptor B2 antibody is un-conjugated |
| Application: | Western Blotting (WB) |

Product Details

| | |
|-----------------------|---|
| Immunogen: | Synthetic phospho-peptide corresponding to amino acid residues surrounding Tyr331 conjugated to KLH |
| Specificity: | Specific for the ~46k EphrinB protein phosphorylated at Tyr331. Immunolabeling is blocked by (-phosphatase treatment. |
| Cross-Reactivity: | Mouse (Murine), Rat (Rattus) |
| Predicted Reactivity: | bovine, chicken, human, mouse, Xenopus, zebra fish |
| Purification: | Antigen Affinity Purified from Pooled Serum |

Target Details

| | |
|---------|-------------------------|
| Target: | EPH Receptor B2 (EPHB2) |
|---------|-------------------------|

Target Details

Alternative Name: [EPHB2 \(EPHB2 Products\)](#)

Background: EphrinB proteins are thought to play key roles in cellular functions as diverse as neuronal migration and blood vessel development (Flanagan and Vanderhaeghen, 1998, Dufour et al., 2003, Oike et al., 2002). EphrinB molecules expressed at the membrane surface bind to the EphB family receptors on target cells during cell-to-cell contact. This interaction leads to cell signaling in the target cell but also generates a reverse signal in the cell expressing EphrinB on its surface. This reverse signaling event is thought to be critical for vessel maturation and neuronal development. Importantly, tyrosine phosphorylation of EphrinB is thought to be a critical component of this reverse signaling event (Palmer et al., 2002). Recent work demonstrated that Tyr331 of EphrinB was phosphorylated in HEK293 cells after stimulation by the soluble EphB2 receptor tyrosine kinase (Kalo et al., 2001). Anti-Phospho-Tyr331 EphrinB Western blot of rat testes lysate showing specific immunolabeling of the ~46k EphrinB phosphorylated at Tyr331 (Control). The phosphospecificity of this labeling is shown in the second lane (lambda-phosphatase: (-Ptase). The blot is identical to the control except that it was incubated in (-Ptase (1200 units for 30 min) before being exposed to the Anti-Tyr331 EphrinB. The immunolabeling is completely eliminated by treatment with (-Ptase.

Molecular Weight: 46 kDa

Gene ID: 396513

UniProt: [P28693](#)

Pathways: [RTK Signaling](#), [Regulation of long-term Neuronal Synaptic Plasticity](#), [S100 Proteins](#)

Application Details

Application Notes: Recommended Dilution: WB: 1:1000 Quality Control: Western blots performed on each lot.

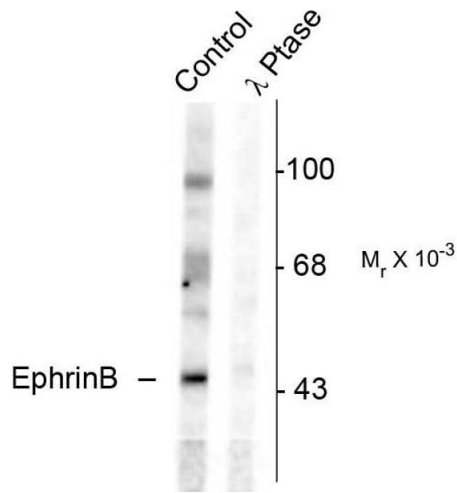
Restrictions: For Research Use only

Handling

Format: Liquid

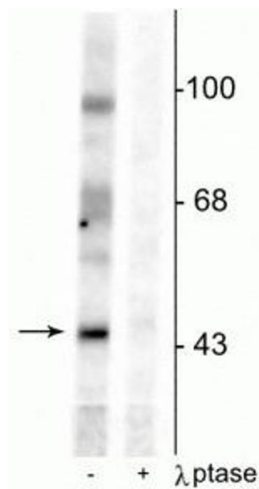
Buffer: 100 µL in 10 mM HEPES (pH 7.5), 150 mM NaCl, 100 µg per ml BSA and 50 % glycerol.

Storage: -20 °C



Western Blotting

Image 1. Western blots of rat testes lysate showing specific immunolabeling of the ~46k EphrinB phosphorylated at Tyr331 (Control). The phosphospecificity of this labeling is shown in the second lane (lambda-phosphatase: (-Ptase). The blot is identical to the control except that it was incubated in (-Ptase (1200 units for 30 min) before being exposed to the Anti-Tyr331 EphrinB. The immunolabeling is completely eliminated by treatment with (-Ptase.



Western Blotting

Image 2. Western blot of rat testes lysate showing specific immunolabeling of the ~46 kDa EphrinB phosphorylated at Tyr331 in the first lane (-). Phosphospecificity is shown in the second lane (+) where immunolabeling is completely eliminated by lysate treatment with lambda phosphatase (λ-Ptase, 800 units/1mg protein for 30 min).