

Datasheet for ABIN361497
anti-SYT1 antibody (pSer309)

3 Images

5 Publications

[Go to Product page](#)

Overview

Quantity:	100 µL
Target:	SYT1
Binding Specificity:	pSer309
Reactivity:	Rat
Host:	Rabbit
Clonality:	Polyclonal
Conjugate:	This SYT1 antibody is un-conjugated
Application:	Western Blotting (WB), Immunohistochemistry (IHC)

Product Details

Immunogen:	Synthetic phospho-peptide corresponding to amino acid residues surrounding Ser309 conjugated to KLH
Specificity:	Specific for the ~60k-62k synaptotagmin protein phosphorylated at Ser309.
Cross-Reactivity:	Rat (Rattus)
Predicted Reactivity:	bovine, canine, chicken, human, mouse, non-human primate, zebra fish
Purification:	Antigen Affinity Purified from Pooled Serum

Target Details

Target:	SYT1
Alternative Name:	SYT1 (SYT1 Products)

Target Details

Molecular Weight:	60/62 kDa
Gene ID:	25716
UniProt:	P21707
Pathways:	Synaptic Vesicle Exocytosis , Dicarboxylic Acid Transport

Application Details

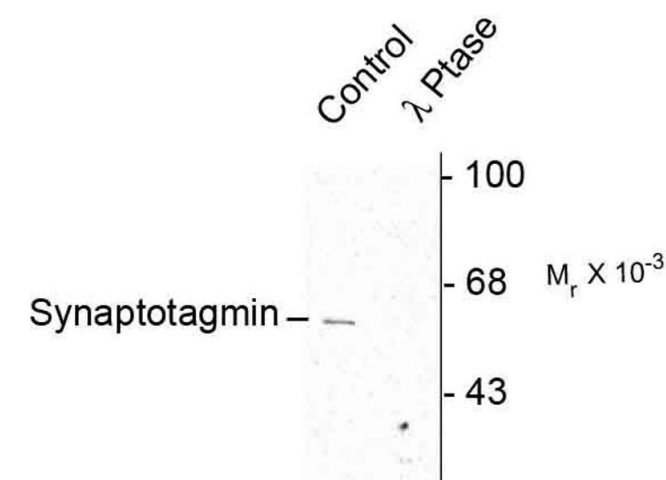
Application Notes:	Recommended Dilution: WB: 1:1000 IHC: 1:400 Quality Control: Western blots performed on each lot.
Restrictions:	For Research Use only

Handling

Format:	Liquid
Buffer:	100 µL in 10 mM HEPES (pH 7.5), 150 mM NaCl, 100 µg per ml BSA and 50 % glycerol.
Storage:	-20 °C

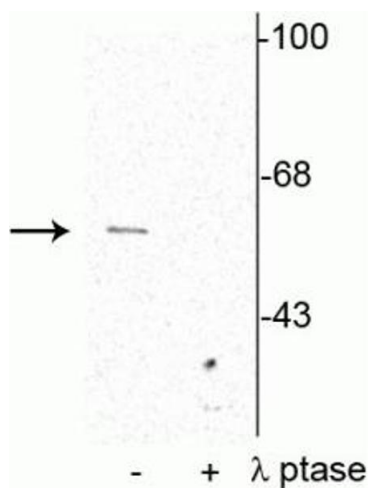
Publications

Product cited in:	<p>Allan, Storey: "Expression of NF-κB and downstream antioxidant genes in skeletal muscle of hibernating ground squirrels, <i>Spermophilus tridecemlineatus</i>." in: Cell biochemistry and function, Vol. 30, Issue 2, pp. 166-74, (2012) (PubMed).</p> <p>Ishii, Kunihiro, Tanaka, Hatano, Nishikata: "Cytosolic subunits of ATP synthase are localized to the cortical endoplasmic reticulum-rich domain of the ascidian egg myoplasm." in: Development, growth & differentiation, Vol. 54, Issue 8, pp. 753-66, (2012) (PubMed).</p> <p>Wu, Hsiao, Chien, Lai: "Ischemic conditioning by short periods of reperfusion attenuates renal ischemia/reperfusion induced apoptosis and autophagy in the rat." in: Journal of biomedical science, Vol. 16, pp. 19, (2009) (PubMed).</p>
-------------------	---



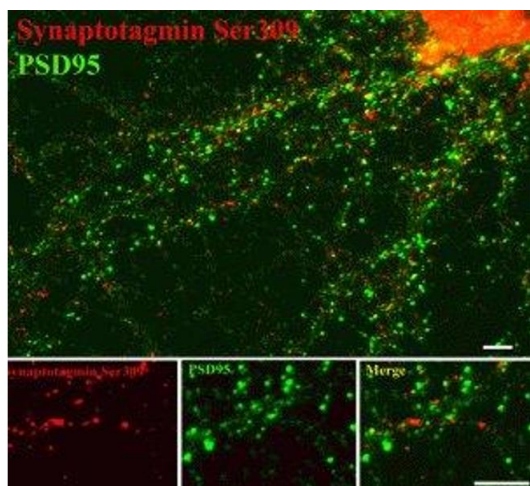
Western Blotting

Image 1. Western blots of rat cortex lysate showing specific immunolabeling of the ~60k - ~62k synaptotagmin phosphorylated at Ser309 (Control). The phosphospecificity of this labeling is shown in the second lane (lambda-phosphatase: (-Ptase). The blot is identical to the control except that it was incubated in (-Ptase (1200 units for 30 min) before being exposed to the Ser309 synaptotagmin antibody. The immunolabeling is completely eliminated by treatment with (-Ptase.



Western Blotting

Image 2. Western blot of rat cortical lysate showing specific immunolabeling of the ~62 kDa synaptotagmin phosphorylated at Thr202 in the first lane (-). Phosphospecificity is shown in the second lane (+) where the immunolabeling is completely eliminated by blot treatment with lambda phosphatase (λ-Ptase, 1200 units for 30 minutes).



Immunostaining

Image 3. Immunostaining of 14 DIV rat cortical neurons showing synaptotagmin when phosphorylated at Thr202 in red and PSD95 in green. Photo courtesy of Gang Liu.