

Datasheet for ABIN361521  
**anti-Synaptoporin antibody (C-Term)**



[Go to Product page](#)

3 Images

### Overview

Quantity:	100 µL
Target:	Synaptoporin (SYNPR)
Binding Specificity:	C-Term
Reactivity:	Rat
Host:	Rabbit
Clonality:	Polyclonal
Conjugate:	This Synaptoporin antibody is un-conjugated
Application:	Western Blotting (WB)

### Product Details

Immunogen:	Synthetic peptide corresponding to amino acid residues from the C-terminal region conjugated to KLH
Specificity:	Specific for ~38k Synaptophysin 2 protein.
Cross-Reactivity:	Rat (Rattus)
Predicted Reactivity:	mouse
Purification:	Antigen Affinity Purified from Pooled Serum

### Target Details

Target:	Synaptoporin (SYNPR)
Alternative Name:	SYNPR ( <a href="#">SYNPR Products</a> )

## Target Details

**Background:** Synaptophysin 2, also known as Synaptoporin, is a component of the synaptic vesicle membrane and thought to play an important role in synaptic vesicle trafficking (Dai et al., 2003). It is highly homologous to Synaptophysin 1, yet differs in expression. Whereas Synaptophysin 1 is ubiquitously expressed, Synaptophysin 2 is concentrated in the mossy fiber synapses of the hippocampus (Grabs et al., 1994, Singec et al., 2002). Anti-Synaptophysin 2 Western blot of rat hippocampal lysate showing specific labeling of the ~38k Synaptophysin2 protein.

**Molecular Weight:** 38 kDa

**Gene ID:** 66030

**UniProt:** [P22831](#)

## Application Details

**Application Notes:** Recommended Dilution: WB: 1:1000 Quality Control: Western blots performed on each lot.

**Restrictions:** For Research Use only

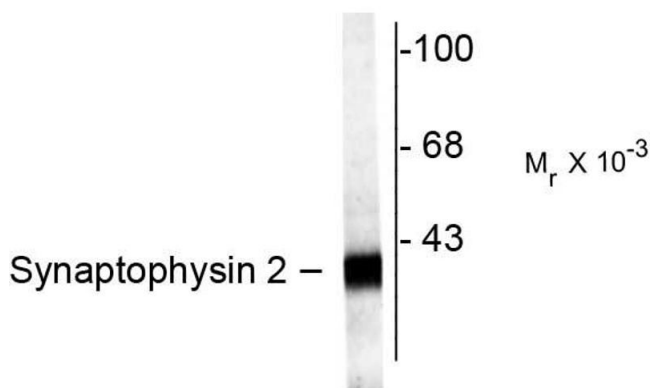
## Handling

**Format:** Liquid

**Buffer:** 100  $\mu$ L in 10 mM HEPES ( pH 7.5), 150 mM NaCl, 100  $\mu$ g per ml BSA and 50 % glycerol.

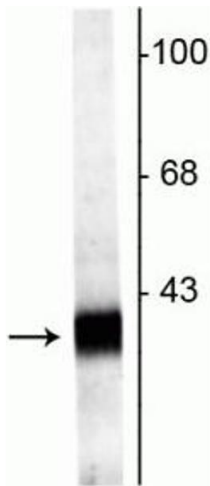
**Storage:** -20  $^{\circ}$ C

## Validation report #104331 for Multiplex Immunohistochemistry (mIHC)



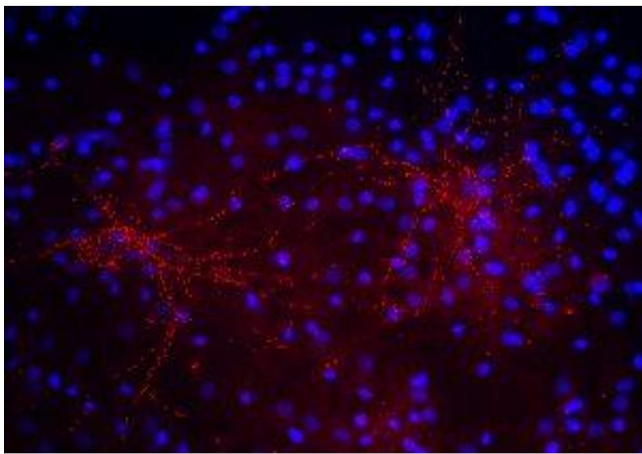
### Western Blotting

**Image 1.** Western blots of rat hippocampal lysate showing specific labeling of the ~38k synaptophysin 2 protein.



### Western Blotting

**Image 2.** Western blot of rat hippocampal lysate showing specific labeling of the ~38 kDa Synaptophysin2 protein.



### Immunostaining

**Image 3.** Immunostaining of 40DIV cultured rat cortical neurons showing punctate labeling of synaptophysin in red and DNA in blue. Cells and photo courtesy of QBMCellScience.