

Datasheet for ABIN361750

anti-BIM antibody[Go to Product page](#)**2** Images**1** Publication

Overview

Quantity:	100 µg
Target:	BIM (BCL2L11)
Reactivity:	Human
Host:	Rabbit
Clonality:	Polyclonal
Conjugate:	This BIM antibody is un-conjugated
Application:	Western Blotting (WB), Immunohistochemistry (IHC)

Product Details

Immunogen:	Internal central amino acids of human Bim
Specificity:	Detects ~23 kDa.
Cross-Reactivity:	Human, Mouse, Rat
Purification:	Protein A Purified

Target Details

Target:	BIM (BCL2L11)
Alternative Name:	BIM/BOD (BCL2L11 Products)
Background:	Members in the Bcl-2 family are critical regulators of apoptosis by either inhibiting or promoting cell death. Bim/BOD is a group of three splice variants, BimEL, BimL and BimS, with apparent molecular masses of ~23, 16, and 13 kDa, respectively. Bcl-2 homology 3 (BH3) domain is a potent death domain. BH3 domain containing pro-apoptotic proteins, including Bad, Bax, Bid,

Target Details

Bim, and Hrk, form a growing subclass of the Bcl-2 family. A novel BH3 domain containing protein was recently identified and designated Bim or BOD in human, mouse and rat (1,2). Bim/BOD interacts with diverse members in the pro-survival Bcl-2 sub-family including Bcl-2, Bcl-xL and Bcl-w. Bim/BOD induces apoptosis. The messenger RNA of Bim is ubiquitously expressed in multiple tissues and cell lines (1,2).

Gene ID: 10018

NCBI Accession: [NP_619527](#)

UniProt: [O43521](#)

Pathways: [PI3K-Akt Signaling](#), [Neurotrophin Signaling Pathway](#), [Tube Formation](#), [Positive Regulation of Endopeptidase Activity](#)

Application Details

Application Notes:

- WB (1:1000)
- IHC (1:100)
- optimal dilutions for assays should be determined by the user.

Comment: 1 µg/ml of ABIN361749 was sufficient for detection of Bim in 20 µg of K562 and A549 cell lysates by colorimetric immunoblot analysis using Goat anti-rabbit IgG:HRP as the secondary antibody.

Restrictions: For Research Use only

Handling

Format: Liquid

Concentration: 1 mg/mL

Buffer: PBS, 50 % glycerol, 0.09 % sodium azide, Storage buffer may change when conjugated

Preservative: Sodium azide

Precaution of Use: This product contains Sodium azide: a POISONOUS AND HAZARDOUS SUBSTANCE which should be handled by trained staff only.

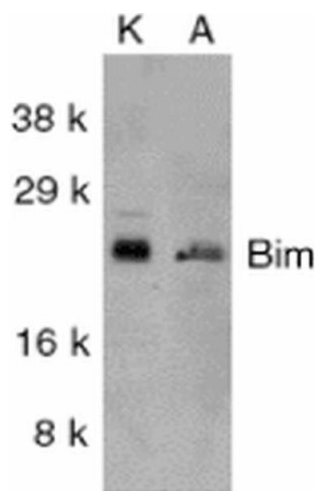
Storage: -20 °C

Storage Comment: -20°C

Publications

Product cited in: Vartanian, Masri, Martin, Cloninger, Holmes, Artinian, Funk, Ruegg, Gera: "AP-1 regulates cyclin D1 and c-MYC transcription in an AKT-dependent manner in response to mTOR inhibition: role of AIP4/Itch-mediated JUNB degradation." in: **Molecular cancer research : MCR**, Vol. 9, Issue 1 , pp. 115-30, (2011) ([PubMed](#)).

Images



Western Blotting

Image 1. Western blot analysis of Human K562 (Left) and A549 (Right) whole cell lysates showing detection of BIM protein using Rabbit Anti-BIM Polyclonal Antibody (ABIN361749 and ABIN361750). Primary Antibody: Rabbit Anti-BIM Polyclonal Antibody (ABIN361749 and ABIN361750) at 1:1000.

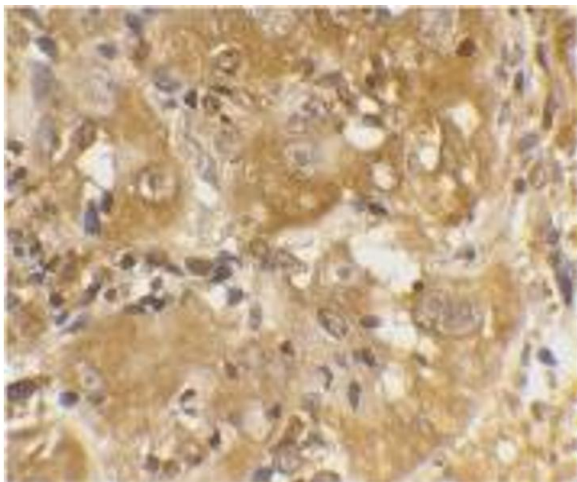


Image 2. Bim Bod (IN), Human Skin Cancer Cells.