

Datasheet for ABIN361769

anti-KCNJ2 antibody (AA 41-64)**5** Images[Go to Product page](#)

Overview

Quantity:	100 µg
Target:	KCNJ2
Binding Specificity:	AA 41-64
Reactivity:	Mouse
Host:	Mouse
Clonality:	Monoclonal
Conjugate:	This KCNJ2 antibody is un-conjugated
Application:	Western Blotting (WB), Immunohistochemistry (IHC), Immunocytochemistry (ICC), Immunofluorescence (IF), Antibody Array (AA)

Product Details

Immunogen:	Fusion protein amino acids 41-64 and 189-428 of mouse Kir2.1
Clone:	S112
Isotype:	IgG1
Specificity:	Detects ~45 kDa. No cross-reactivity against Kir2.2 or Kir2.3.
Cross-Reactivity:	Human, Monkey, Mouse, Rat
Purification:	Protein G Purified

Target Details

Target:	KCNJ2
---------	-------

Target Details

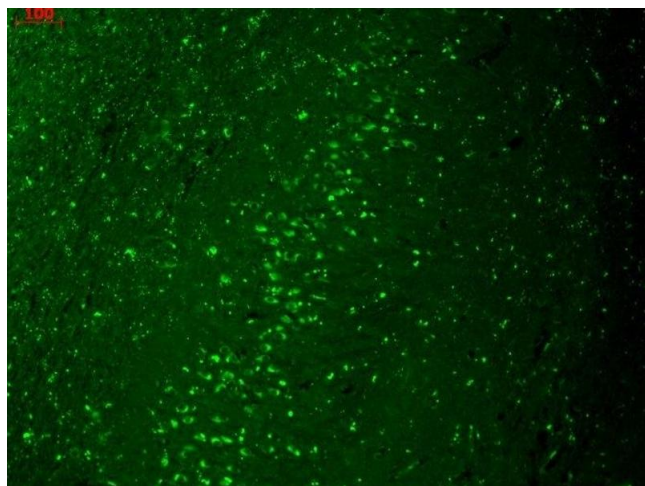
Alternative Name:	Kir2.1 (KCNJ2 Products)
Background:	The Kir2.1 inward-rectifier potassium ion channel is encoded by the KCNJ2 gene. A defect in this gene is associated with Andersen-Tawil syndrome (1).
Gene ID:	16518
NCBI Accession:	NP_032451
UniProt:	P35561

Application Details

Application Notes:	<ul style="list-style-type: none">• WB (1:1000)• IHC (1:1000)• ICC/IF (1:100)• optimal dilutions for assays should be determined by the user.
Comment:	1 µg/ml of ABIN361769 was sufficient for detection of Kir2.1 in 10 µg of rat brain lysate by colorimetric immunoblot analysis using Goat anti-mouse IgG:HRP as the secondary antibody.
Restrictions:	For Research Use only

Handling

Format:	Liquid
Concentration:	1 mg/mL
Buffer:	PBS pH 7.4, 50 % glycerol, 0.09 % sodium azide, Storage buffer may change when conjugated
Preservative:	Sodium azide
Precaution of Use:	This product contains Sodium azide: a POISONOUS AND HAZARDOUS SUBSTANCE which should be handled by trained staff only.
Storage:	-20 °C
Storage Comment:	-20°C



Immunohistochemistry

Image 1. Immunohistochemistry analysis using Mouse Anti-Kir2.1 Potassium Channel Monoclonal Antibody, Clone S112 (ABIN361769). Tissue: hippocampus. Species: Human. Fixation: Bouin's Fixative and paraffin-embedded. Primary Antibody: Mouse Anti-Kir2.1 Potassium Channel Monoclonal Antibody (ABIN361769) at 1:1000 for 1 hour at RT. Secondary Antibody: FITC Goat Anti-Mouse (green) at 1:50 for 1 hour at RT.

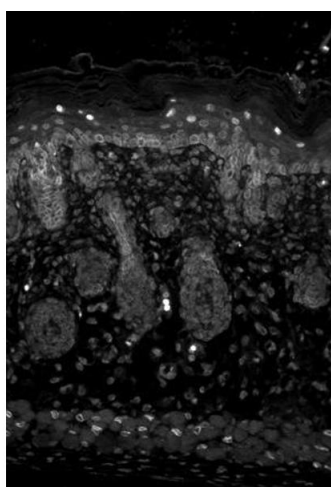
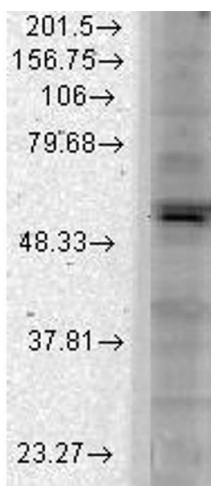


Image 2. Kir2 Mouse backskin.



Western Blotting

Image 3. Kir2 1 Rat Brain Membranes Western Blotting.

Please check the [product details page](#) for more images. Overall 5 images are available for ABIN361769.