



[Go to Product page](#)

Datasheet for ABIN363207

anti-Neurofibromin 1 antibody (N-Term)

2 Images

Overview

Quantity:	0.05 mL
Target:	Neurofibromin 1 (NF1)
Binding Specificity:	N-Term
Reactivity:	Human, Mouse, Rat, Guinea Pig
Host:	Mouse
Clonality:	Monoclonal
Conjugate:	This Neurofibromin 1 antibody is un-conjugated
Application:	ELISA, Immunohistochemistry (Paraffin-embedded Sections) (IHC (p)), Immunoprecipitation (IP)

Product Details

Immunogen:	Synthetic peptide derived from Nter domain of human neurofibromin
Clone:	McNFn27
Isotype:	IgG1 kappa
Specificity:	Reacts with human and rodent neurofibromin
Cross-Reactivity (Details):	Not tested in other species.
Purification:	Purified

Target Details

Target:	Neurofibromin 1 (NF1)
---------	-----------------------

Target Details

Alternative Name:	Neurofibromin (NF1 Products)
UniProt:	P21359
Pathways:	cAMP Metabolic Process , Regulation of long-term Neuronal Synaptic Plasticity

Application Details

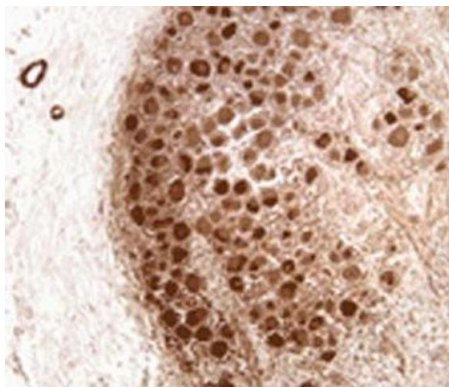
Application Notes:	Working dilution: Optimal dilution should be determined by the end user. The following are guidelines only : - ELISA : 10 to 20 µg/mL - IHC - P : 10 to 20 µg/mL - IP : 10 to 20 µg/mL
--------------------	----------------------------------------------------------------------------------------------------------------------------------------------------------------------------------------------

Restrictions:	For Research Use only
---------------	-----------------------

Handling

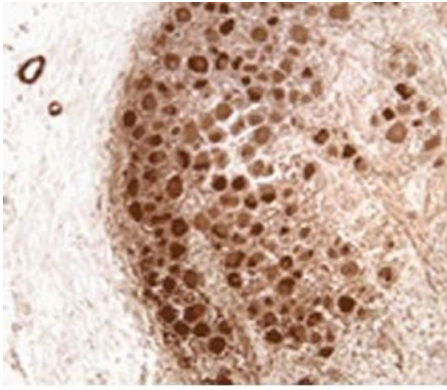
Format:	Liquid
Concentration:	10 mg/mL
Buffer:	, Sodium azide 0.1 %
Preservative:	Sodium azide
Precaution of Use:	This product contains Sodium azide: a POISONOUS AND HAZARDOUS SUBSTANCE which should be handled by trained staff only.
Storage:	4 °C
Storage Comment:	Store at 4°C. Do not freeze.

Images



Immunocytochemical staining of adult human dorsal root ganglia, using mab50053

Image 1.



Immunocytochemical staining of adult human dorsal root ganglia, using mab50053

Image 2.