



[Go to Product page](#)

Datasheet for ABIN363208

## anti-Neurofibromin 1 antibody (N-Term)

### 2 Images

#### Overview

Quantity:	0.05 mL
Target:	Neurofibromin 1 (NF1)
Binding Specificity:	N-Term
Reactivity:	Human, Mouse, Rat, Guinea Pig
Host:	Mouse
Clonality:	Monoclonal
Application:	ELISA, Western Blotting (WB), Immunoprecipitation (IP)

#### Product Details

Immunogen:	Synthetic peptide derived from Nter domain of human neurofibromin
Clone:	McNFn27a
Isotype:	IgG1 kappa
Specificity:	Reacts with human full-length or truncated forms of neurofibromin
Cross-Reactivity (Details):	Cross reacts with rodent neurofibromin. Not tested in other species.
Purification:	Purified

#### Target Details

Target:	Neurofibromin 1 (NF1)
Alternative Name:	Neurofibromin ( <a href="#">NF1 Products</a> )
UniProt:	<a href="#">P21359</a>

## Target Details

Pathways: [cAMP Metabolic Process](#), [Regulation of long-term Neuronal Synaptic Plasticity](#)

## Application Details

Application Notes: Working dilution: Optimal dilution should be determined by the end user.

The following are guidelines only :

- ELISA : 2 to 5 µg/mL - IP : 2 to 5 µg/mL - WB : 2 to 5 µg/mL

Restrictions: For Research Use only

## Handling

Format: Liquid

Concentration: 10 mg/mL

Buffer: , Sodium azide

Preservative: Sodium azide

Precaution of Use: This product contains Sodium azide: a POISONOUS AND HAZARDOUS SUBSTANCE which should be handled by trained staff only.

Storage: -20 °C/-80 °C

Storage Comment: Aliquot and store at -20°C or -80°C. Avoid freeze-thaw cycles.

## Images



**Specificity of Neurofibromin, using mab50054  
in Schwann cells from embryonic knockout mice,  
adult human nerves and neonatal rat nerves**

**Image 1.**

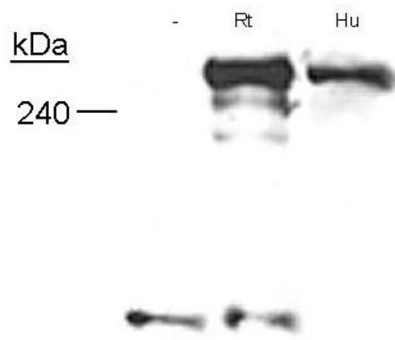


Image 2.

Specificity of Neurofibromin, using mab50054  
in Schwann cells from embryonic knockout mice,  
adult human nerves and neonatal rat nerves