



[Go to Product page](#)

Datasheet for ABIN363218  
**anti-BUB1B antibody**

4 Images

Overview

Quantity:	0.1 mL
Target:	BUB1B
Reactivity:	Human, Mouse
Host:	Mouse
Clonality:	Monoclonal
Application:	Western Blotting (WB), Immunofluorescence (IF), Immunoprecipitation (IP), Flow Cytometry (FACS), Immunocytochemistry (ICC)

Product Details

Immunogen:	A portion of hBUBR1 tagged at the N-terminus with pMAL (residues 1-350 of human BUBR1)
Clone:	8G1
Isotype:	IgG1 kappa
Specificity:	Reacts with human and mouse hBUBR1 protein
Purification:	Purified (protein G)

Target Details

Target:	BUB1B
Alternative Name:	Mitotic Checkpoint Serine/threonine-Protein Kinase BUB1 beta ( <a href="#">BUB1B Products</a> )
Background:	Belongs to the protein kinase superfamily. Ser/Thr protein kinase family. BUB1 subfamily. Defects in BUB1B are the cause of premature chromatid separation trait (PCS). Defects in BUB1B are the cause of mosaic variegated aneuploidy syndrome type 1 (MVA1).

## Target Details

Gene ID: 701

UniProt: [O60566](#)

## Application Details

Application Notes: Working dilution: Optimal dilution should be determined by the end user.  
The following are guidelines only :  
WB(1:2000 - 1:5000) FC(1 µg per million cells) ICC/IF(1:100) IP(1:10 - 1:500)

Restrictions: For Research Use only

## Handling

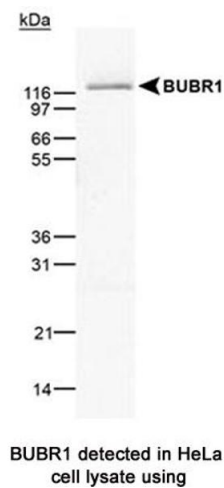
Format: Liquid

Concentration: 0.6 mg/mL

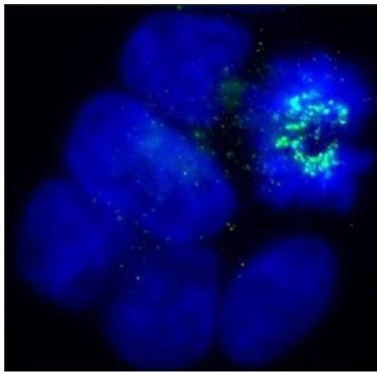
Storage: -20 °C/-80 °C

Storage Comment: Aliquot and store at -20°C or -80°C. Avoid freeze-thaw cycles.

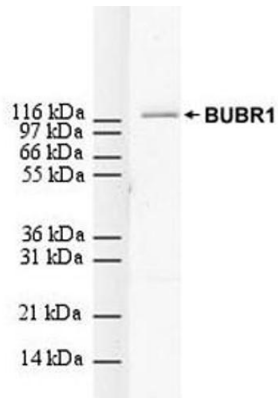
## Images



**Image 1.**



Immunofluorescence of an asynchronous cycling population of human cells (U2OS) with mab50064  
No signal is detected from interphase cells, whereas cells undergoing mitosis accumulate BubR1 at the kinetochores.  
Image reveals kinetochores at prometaphase



Detection of BUBR1 in HeLa  
WCE using mab50064

Image 2.

Image 3.

Please check the [product details page](#) for more images. Overall 4 images are available for ABIN363218.