

Datasheet for ABIN363259

anti-LMO2 antibody**2** Images[Go to Product page](#)

Overview

Quantity:	0.1 mL
Target:	LMO2
Reactivity:	Human
Host:	Mouse
Clonality:	Monoclonal
Conjugate:	This LMO2 antibody is un-conjugated
Application:	Western Blotting (WB), Immunohistochemistry (Paraffin-embedded Sections) (IHC (p)), Immunofluorescence (IF), Immunoprecipitation (IP)

Product Details

Immunogen:	Recombinant human LMO2
Clone:	1A9-3B11
Isotype:	IgG1 kappa
Specificity:	Reacts with human LMO2
Cross-Reactivity (Details):	Not tested in other species.
Purification:	Purified (protein G)

Target Details

Target:	LMO2
Alternative Name:	LIM Domain Only 2 (LMO2 Products)

Target Details

Pathways: [Chromatin Binding](#)

Application Details

Application Notes: Working dilution: Optimal dilution should be determined by the end user.
The following are guidelines only :
- IF : 1/100 to 1/500 - IHC - P : 1/100 to 1/500 - WB : 0.5 µg/mL

Restrictions: For Research Use only

Handling

Format: Liquid

Concentration: 1 mg/mL

Buffer: Tris-glycine, NaCl 150 mM buffer, Sodium azide 0.05 %

Preservative: Sodium azide

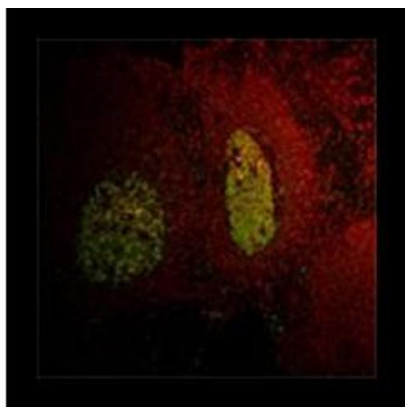
Precaution of Use: This product contains Sodium azide: a POISONOUS AND HAZARDOUS SUBSTANCE which should be handled by trained staff only.

Storage: 4 °C/-20 °C

Storage Comment: Short term storage at +4°C. For extended periods store in aliquots at -20°C. Antibodies are guaranteed for 6 month from date of receipt.

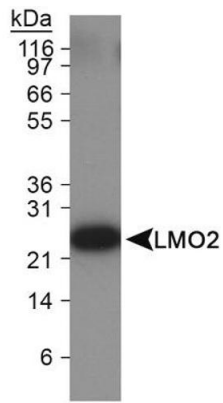
Expiry Date: 6 months

Images



**Immunofluorescent labeling of LMO2 (green)
in tonsil tissue using mab50105**

Image 1.



Detection of LMO2 in Ramos cell lysate using mab50105

Image 2.