



[Go to Product page](#)

Datasheet for ABIN363310

anti-Mre11 antibody

5 Images

Overview

Quantity:	0.05 mL
Target:	Mre11 (MRE11A)
Reactivity:	Human, Rat, Mouse, Chicken, Hamster
Host:	Rabbit
Clonality:	Polyclonal
Application:	Western Blotting (WB), Immunohistochemistry (IHC), Immunofluorescence (IF), Immunoprecipitation (IP), Immunocytochemistry (ICC), Chromatin Immunoprecipitation (ChIP), Flow Cytometry (FACS)

Product Details

Immunogen:	Full length human Mre11 protein.
Specificity:	Reacts with Mre11 from human, mouse, rat, chicken, hamster
Purification:	Antiserum

Target Details

Target:	Mre11 (MRE11A)
Abstract:	MRE11A Products
Background:	The hMre11-hRad50-NBS1 protein plays a central role in the human cellular DNA-Damage response, with recent studies indicating that these proteins help link DNA-damage detection to DNA-repair and cell cycle-checkpoint functions. This protein complex has been implicated in the activation of cell cycle-regulatory pathways, due to the fact that the NBS1 gene mutates in the

Target Details

chromosomal-instability syndrome, Nijmegen breakdown syndrome (NBS), which is characterized by increased cancer incidence, cell cycle checkpoint defects, and ionizing radiation sensitivity.

UniProt: [P49959](#)

Pathways: [DNA Damage Repair](#)

Application Details

Application Notes: Working dilution: Optimal dilution should be determined by the end user.

The following are guidelines only :

- IF : 1/200 - IP : 3 μ L - WB : 1/5000 - IHC: 1/10 to 1/200

Restrictions: For Research Use only

Handling

Format: Liquid

Buffer: , Sodium azide

Preservative: Sodium azide

Precaution of Use: This product contains Sodium azide: a POISONOUS AND HAZARDOUS SUBSTANCE which should be handled by trained staff only.

Storage: -20 °C/-80 °C

Storage Comment: Aliquot and store at -20°C or -80°C. Avoid freeze-thaw cycles.

Images

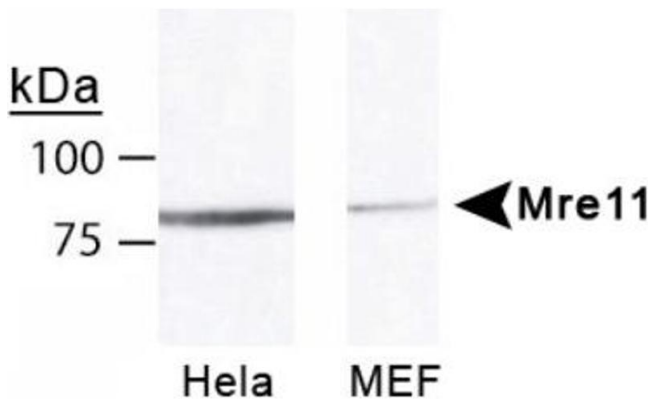
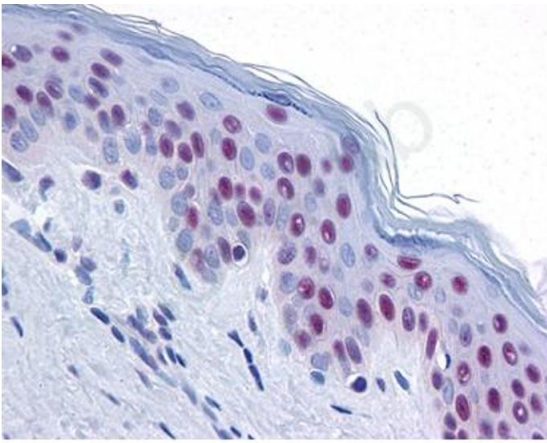


Image 1.



MRE11 staining in the human epidermis detected with pab50001.

Image 2.

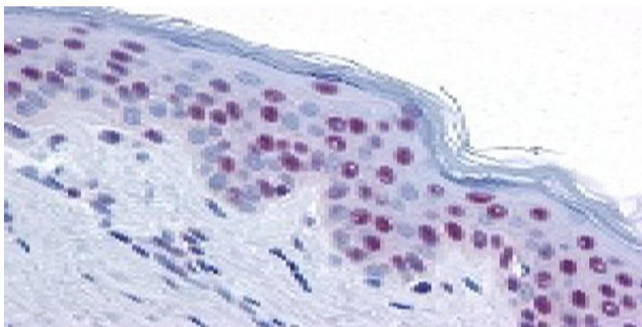


Image 3.

Please check the [product details page](#) for more images. Overall 5 images are available for ABIN363310.