



[Go to Product page](#)

Datasheet for ABIN363311
anti-NLRP2 antibody

2 Images

Overview

Quantity:	0.05 mL
Target:	NLRP2
Reactivity:	Human, Mouse, Hamster, Monkey
Host:	Rabbit
Clonality:	Polyclonal
Conjugate:	This NLRP2 antibody is un-conjugated
Application:	Western Blotting (WB), Immunoprecipitation (IP), Immunofluorescence (IF), Immunocytochemistry (ICC)

Product Details

Immunogen:	Partial length human NBS1 protein [Swiss-Prot# O60934].
Specificity:	Reacts with NBS1 from human, mouse, hamster and primate
Purification:	Antiserum

Target Details

Target:	NLRP2
Alternative Name:	Nijmegen Breakage Syndrome 1 (NBS1) (NLRP2 Products)
Background:	The p95 gene (identical to NBS1 and nibrin) is a member of the hMre11/hRad50 double-strand break complex. This protein complex has been implicated in Nijmegen breakage syndrome, an autosomal recessive disorder marked by increased cancer incidence, cell cycle checkpoint deficits, and ionizing radiation sensitivity, thus revealing a direct molecular link between double-

Target Details

strand break repair and cell cycle checkpoint functions.

Pathways: [Production of Molecular Mediator of Immune Response, Positive Regulation of Endopeptidase Activity, Inflammasome](#)

Application Details

Application Notes: Working dilution: Optimal dilution should be determined by the end user.

The following are guidelines only :

- ICC : 1/50 to 1/200 - IF : 1/200 - IP : 3 μ L - WB : 1/1000

Restrictions: For Research Use only

Handling

Format: Liquid

Buffer: , Sodium azide 0.02 %

Preservative: Sodium azide

Precaution of Use: This product contains Sodium azide: a POISONOUS AND HAZARDOUS SUBSTANCE which should be handled by trained staff only.

Storage: -20 °C/-80 °C

Storage Comment: Aliquot and store at -20°C or -80°C. Avoid freeze-thaw cycles.

Images



Detection of human NBS1 using pab50002.

Image 1.

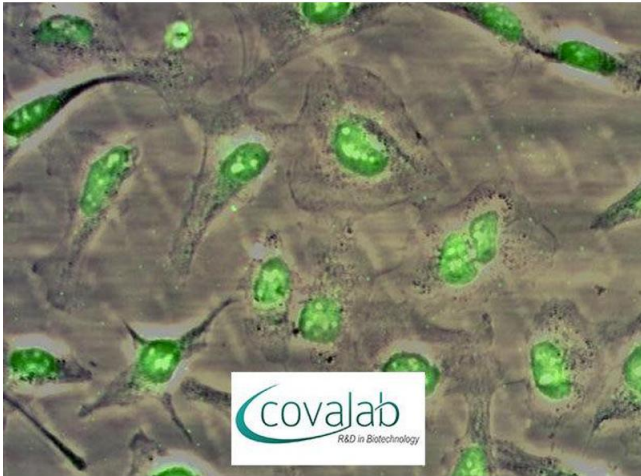


Image 2.