

Datasheet for ABIN363336
anti-XAGE1D antibody[Go to Product page](#)

1 Image

Overview

Quantity:	0.1 mL
Target:	XAGE1D
Reactivity:	Human
Host:	Rabbit
Clonality:	Polyclonal
Application:	Western Blotting (WB), Immunoprecipitation (IP)

Product Details

Immunogen:	Synthetic peptide derived from an internal sequence within the human XAGE1 protein
Specificity:	Reacts with human XAGE1
Purification:	Antiserum

Target Details

Target:	XAGE1D
Alternative Name:	X antigen family, member 1 (XAGE1D Products)
Background:	The XAGE-1 gene is a human X-linked gene. It is a putative member of the cancer testis antigen family. It is highly expressed in normal testis tissue and various cancer tissues, such as breast and lung cancers. XAGE-1 has homology to the GAGE/PAGE proteins.

Application Details

Application Notes:	Working dilution: Optimal dilution should be determined by the end user.
--------------------	--

Application Details

The following are guidelines only:
- IP : 1/500 - WB : 1/500

Restrictions: For Research Use only

Handling

Format: Liquid

Storage: -20 °C/-80 °C

Storage Comment: Aliquot and store at -20°C or -80°C. Avoid freeze-thaw cycles.

Images

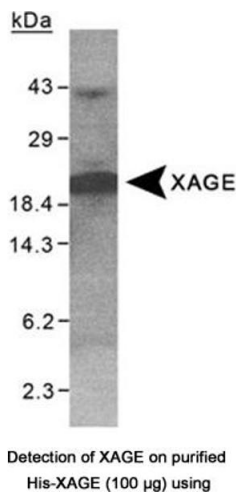


Image 1.