

Datasheet for ABIN363364

**anti-IMMT antibody****2** Images[Go to Product page](#)

## Overview

Quantity:	0.1 mL
Target:	IMMT
Reactivity:	Human, Mouse, Rat, Dog, Cat
Host:	Rabbit
Clonality:	Polyclonal
Application:	Western Blotting (WB), Immunofluorescence (IF)

## Product Details

Immunogen:	Whole Mitofilin human recombinant protein
Specificity:	Reacts with Mitofilin from human, mouse, rat, canine, feline
Purification:	Antiserum

## Target Details

Target:	IMMT
Alternative Name:	Mitofilin ( <a href="#">IMMT Products</a> )
Background:	Mitofilin is one of the most abundant mitochondrial proteins in the human heart. It appears to play an important role in the maintenance of cristae morphology. Mitofilin was originally described as heart muscle protein (HMP) because of its high expression in the heart. Mitochondria are the center of cellular energy production and essential metabolic reactions.

## Application Details

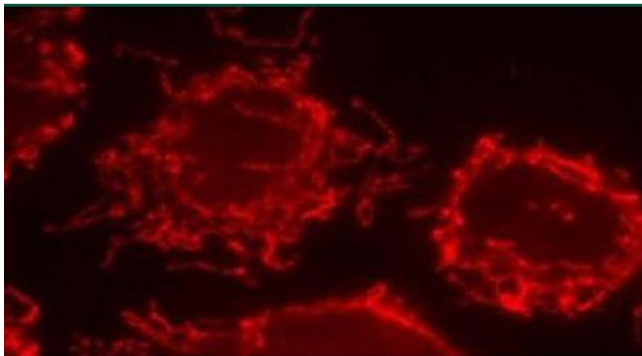
Application Notes: Working dilution: Optimal dilution should be determined by the end user.  
The following are guidelines only :  
- IF : 1/500 -WB : 1/2 000

Restrictions: For Research Use only

## Handling

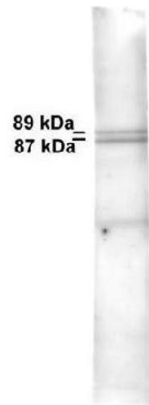
Format:	Liquid
Buffer:	, Sodium azide 0.05 %
Preservative:	Sodium azide
Precaution of Use:	This product contains Sodium azide: a POISONOUS AND HAZARDOUS SUBSTANCE which should be handled by trained staff only.
Storage:	-20 °C/-80 °C
Storage Comment:	Aliquot and store at -20°C or -80°C. Avoid freeze-thaw cycles.

## Images



Immunofluorescence of HeLa cells with antibody 1:500 dilution  
labeling mitochondria

**Image 1.**



Western blot of dog testis total protein  
extract 1:2000 dilution of antibody

Image 2.