

Datasheet for ABIN363379

**anti-APEX1 antibody**

## 5 Images

[Go to Product page](#)

## Overview

Quantity:	0.1 mL
Target:	APEX1
Reactivity:	Human, Mouse, Rat, Rabbit
Host:	Rabbit
Clonality:	Polyclonal
Application:	Western Blotting (WB), Immunohistochemistry (IHC), Immunofluorescence (IF), Immunoprecipitation (IP), Immunocytochemistry (ICC), Chromatin Immunoprecipitation (ChIP), Neutralization (Neut)

## Product Details

Immunogen:	Affinity purified human Apurinic/Apyrimidinic Endonuclease (APE/ref-1) fusion protein
Specificity:	Reacts with human ~37 kDa APE-1 protein
Cross-Reactivity:	Mouse (Murine), Rabbit, Rat (Rattus)
Cross-Reactivity (Details):	Cross reacts with proteins from mouse, rat and rabbit.
Purification:	Antigen affinity purified

## Target Details

Target:	APEX1
Alternative Name:	DNA-(Apurinic Or Apyrimidinic Site) Lyase (APE-1) ( <a href="#">APEX1 Products</a> )
Background:	Multifunctional protein that plays a central role in the cellular response to oxidative stress. The two major activities of APEX1 in DNA repair and redox regulation of transcriptional factors.

## Target Details

Functions as a apurinic/aprimidinic (AP) endodeoxyribonuclease in the DNA base excision repair (BER) pathway of DNA lesions induced by oxidative and alkylating agents.

Gene ID: 328

Pathways: [DNA Damage Repair](#), [Chromatin Binding](#), [Cell RedoxHomeostasis](#), [Smooth Muscle Cell Migration](#), [Positive Regulation of Response to DNA Damage Stimulus](#)

## Application Details

Application Notes: Working dilution: Optimal dilution should be determined by the end user.  
The following are guidelines only :  
- IHC: 1/1 000 - WB : 1/1 000 - B/N: 50-200 Molar excess - ChIP: 1/10-1/500 - ICC/IF: 1/50-1/200 - IP: 7 µg/mL

Restrictions: For Research Use only

## Handling

Format: Liquid

Concentration: 0.5 mg/mL

Buffer: Tris-glycine, NaCl 150 mM buffer, Sodium azide 0.05 %

Preservative: Sodium azide

Precaution of Use: This product contains Sodium azide: a POISONOUS AND HAZARDOUS SUBSTANCE which should be handled by trained staff only.

Storage: -20 °C/-80 °C

Storage Comment: Aliquot and store at -20°C or -80°C. Avoid freeze-thaw cycles.

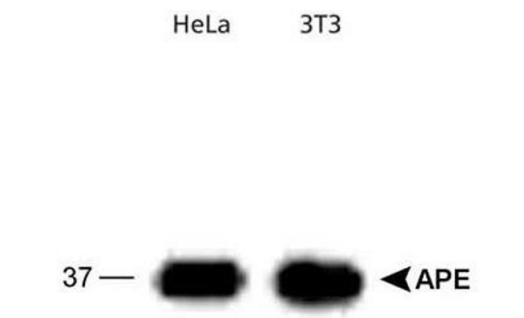


Image 1.

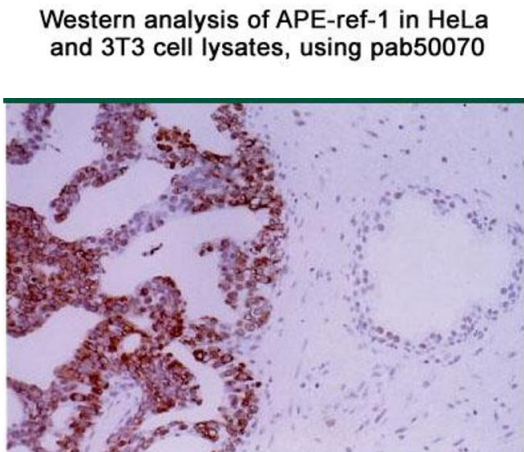


Image 2.

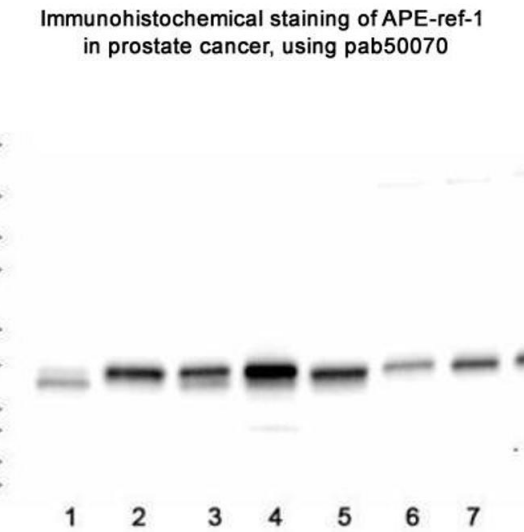


Image 3.

Please check the [product details page](#) for more images. Overall 5 images are available for ABIN363379.