

Datasheet for ABIN363382 **anti-NUDT1 antibody (C-Term)**

3 Images



[Go to Product page](#)

Overview

Quantity:	0.2 mL
Target:	NUDT1
Binding Specificity:	C-Term
Reactivity:	Human, Mouse, Rat
Host:	Rabbit
Clonality:	Polyclonal
Application:	Western Blotting (WB), Immunohistochemistry (IHC), Immunofluorescence (IF), Immunocytochemistry (ICC)

Product Details

Immunogen:	Synthetic peptide derived from the Cter domain of human MTH1 conjugated to KLH
Specificity:	Reacts with human, mouse and rat MTH1
Purification:	Antigen affinity purified

Target Details

Target:	NUDT1
Alternative Name:	MTH1 (NUDT1 Products)
Background:	MTH1 (human MutT Homolog 1) is an oxidized purine nucleoside triphosphatase enzyme that belongs to the Nudix hydrolase family and it acts as major mammalian detoxifier of the oxidized DNA precursor, 8-oxo-dGTP thereby exerting antimutagenic effects and suppressing cell dysfunction/death induced by oxidative stress.

Target Details

Gene ID: 4521

Application Details

Application Notes: Working dilution: Optimal dilution should be determined by the end user.
The following are guidelines only :
WB1:500 IHC1:200 ICC/IF1:50-1:200

Restrictions: For Research Use only

Handling

Format: Liquid

Concentration: 1.1 mg/mL

Buffer: PBS, Sodium azide 0.05 %

Preservative: Sodium azide

Precaution of Use: This product contains Sodium azide: a POISONOUS AND HAZARDOUS SUBSTANCE which should be handled by trained staff only.

Storage: -20 °C/-80 °C

Storage Comment: Aliquot and store at -20°C or -80°C. Avoid freeze-thaw cycles.

Images

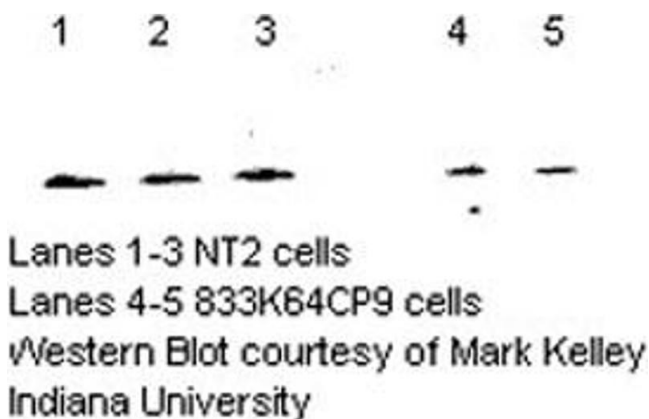


Image 1.



Image 2.

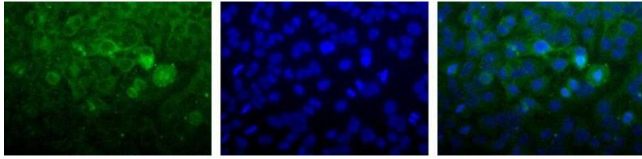


Image 3.

