



[Go to Product page](#)

Datasheet for ABIN363393

anti-ABCA1 antibody (AA 1100-1300)

2 Images

Overview

Quantity:	0.1 mL
Target:	ABCA1
Binding Specificity:	AA 1100-1300
Reactivity:	Mouse, Human, Rat, Hamster
Host:	Rabbit
Clonality:	Polyclonal
Application:	Western Blotting (WB), Immunoprecipitation (IP), Flow Cytometry (FACS), Immunocytochemistry (ICC), Immunofluorescence (IF), Immunohistochemistry (Paraffin- embedded Sections) (IHC (p))

Product Details

Immunogen:	Partial peptide sequence (peptide used resides somewhere between a.a 1100-1300) of the human ABCA1 gene
Specificity:	Reacts with human ~254 kDa ABCA1 protein
Cross-Reactivity:	Mouse (Murine)
Cross-Reactivity (Details):	Cross reacts with proteins from rat, hamster and mouse. Not tested in other species.
Purification:	Purified

Target Details

Target:	ABCA1
Alternative Name:	ATP-Binding Cassette Sub-Family A Member 1 (ABCA1 Products)

Target Details

Pathways: [Cellular Response to Molecule of Bacterial Origin](#), [cAMP Metabolic Process](#), [Regulation of Lipid Metabolism by PPARalpha](#), [Lipid Metabolism](#)

Application Details

Application Notes: Working dilution: Optimal dilution should be determined by the end user.
The following are guidelines only :
- FC : 1/200 - ICC : 1/200 - IF : 1/200 - IHC - P : 1/200 - IP : 1/200

Restrictions: For Research Use only

Handling

Format: Liquid

Buffer: Tris-citrate, phosphate, (pH 7-8) buffer, Sodium azide 0.02 %

Preservative: Sodium azide

Precaution of Use: This product contains Sodium azide: a POISONOUS AND HAZARDOUS SUBSTANCE which should be handled by trained staff only.

Storage: 4 °C

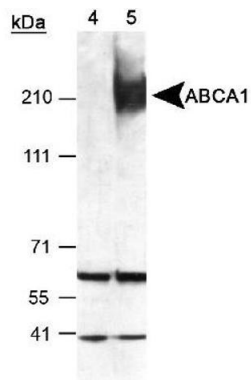
Storage Comment: Store at 4°C. Do not freeze.

Images



Western Blot analysis of ABCA1, using pab50084
Samples: 40 µg of total cell post-nuclear lysate
of raw macrophages treated with 9-cisretinoic
acid and 22R-hydroxycholesterol

Image 1.



Detection of ABCA1 in mouse peritoneal macrophages using pab50084
ECL exposure, 1 min
Lane 4: T09 uninduced lysate
Lane 5: T09 induced lysate

Image 2.