



[Go to Product page](#)

Datasheet for ABIN363395  
**anti-Laminin antibody**

2 Images

### Overview

Quantity:	0.1 mL
Target:	Laminin (LN)
Reactivity:	Human, Mouse, Rat, Rabbit, Sheep
Host:	Rabbit
Clonality:	Polyclonal
Application:	Western Blotting (WB), Immunohistochemistry (Paraffin-embedded Sections) (IHC (p)), Immunofluorescence (IF), Immunohistochemistry (Frozen Sections) (IHC (fro)), Immunocytochemistry (ICC), Functional Studies (Func)

### Product Details

Immunogen:	Laminin isolated from mouse EHS tumor
Specificity:	Reacts well with all laminin isoforms tested: laminin-1 (alpha-1, beta-1, and gamma-1) and laminin-2 (alpha-2, beta-1, and gamma-1) from with mouse, human and rat
Cross-Reactivity (Details):	Not tested in other species.
Purification:	Purified

### Target Details

Target:	Laminin (LN)
Alternative Name:	Laminin ( <a href="#">LN Products</a> )
Background:	Lama1 is expressed in blood vessel and basement membranes
Gene ID:	284217

## Application Details

Application Notes: Working dilution: Optimal dilution should be determined by the end user.  
The following are guidelines only:  
ICC/IF(1:50 - 1:200) IHC(1:500 - 1:2000) IHC-F(1:500 - 1:2000) IHC-P(1:500 - 1:2000) WB( 1:100 - 1:5000)

Restrictions: For Research Use only

## Handling

Format: Liquid

Concentration: 1 mg/mL

Buffer: PBS, Sodium azide 0.05 %

Preservative: Sodium azide

Precaution of Use: This product contains Sodium azide: a POISONOUS AND HAZARDOUS SUBSTANCE which should be handled by trained staff only.

Storage: -20 °C/-80 °C

Storage Comment: Aliquot and store at -20°C or -80°C. Avoid freeze-thaw cycles.

## Images

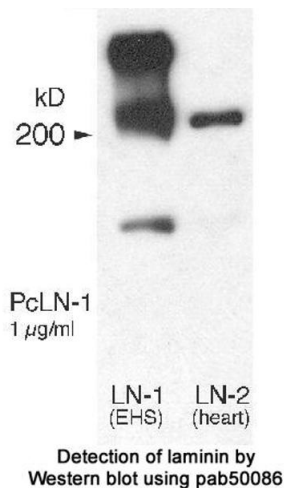
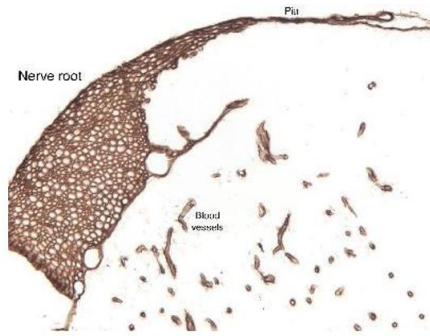


Image 1.



**Image 2.**

Staining of rat spinal cord and dorsal root paraformaldehyde/paraffin-embedded tissue using pab50086  
Pepsin antigen retrieval was performed on this tissue sample.