

Datasheet for ABIN363399
anti-SCARB1 antibody (C-Term)



[Go to Product page](#)

6 Images

Overview

Quantity:	0.1 mL
Target:	SCARB1
Binding Specificity:	AA 450-509, C-Term
Reactivity:	Human, Rat, Mouse
Host:	Rabbit
Clonality:	Polyclonal
Application:	Western Blotting (WB), Immunohistochemistry (IHC), Immunoprecipitation (IP)

Product Details

Immunogen:	A C-terminal peptide containing residues from mouse SR-BI (within residues 450-509)
Specificity:	Reacts with mouse SR-BI
Cross-Reactivity (Details):	Cross reacts with rat, mink and hamster SR-BI and the long form of human CLA-I.
Purification:	Purified

Target Details

Target:	SCARB1
Alternative Name:	Scavenger Receptor Class B Member 1 (SR-BI) (SCARB1 Products)
Pathways:	Cellular Response to Molecule of Bacterial Origin , Hepatitis C , Lipid Metabolism , SARS-CoV-2 Protein Interactome

Application Details

Application Notes: Working dilution: Optimal dilution should be determined by the end user.
The following are guidelines only:
- IHC : 1/1 000 to 1/5 000 - IP : 1/1 000 to 1/5 000 - WB : 1/1 000 to 1/5 000

Restrictions: For Research Use only

Handling

Format: Liquid

Buffer: Tris-citrate, phosphate, (pH 7-8) buffer, Sodium azide 0.1 %

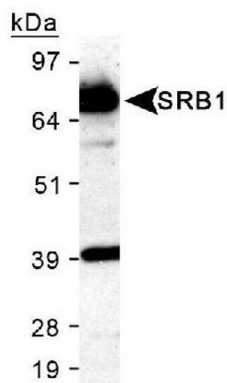
Preservative: Sodium azide

Precaution of Use: This product contains Sodium azide: a POISONOUS AND HAZARDOUS SUBSTANCE which should be handled by trained staff only.

Storage: 4 °C

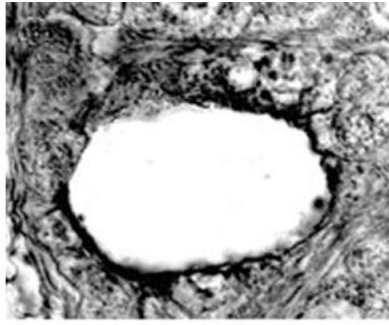
Storage Comment: Store at 4°C. Do not freeze.

Images



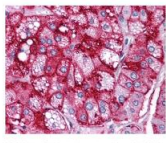
Detection of SR-BI in 25 µg of mouse liver lysate, using pab50090 at a 1/1 000 dilution, shows distinct band at 82 kDa

Image 1.

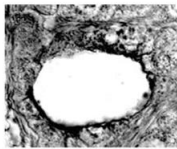


Immunolocalization of SR-BI in adult mink testis using pab50090. SR-BI labeling is visible at the surface and along the outline of the large vacuole
Photo courtesy of R.M. Pelletier, University of Montreal

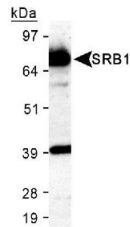
Image 2.



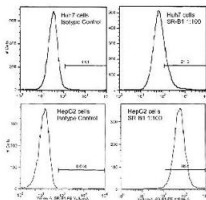
Staining of adrenal cortex using pab50090



Immunolocalization of SR-BI in adult mink testis using pab50090. SR-BI labeling is visible at the surface and along the outline of the large vacuole
Photo courtesy of R.M. Pelletier, University of Montreal



Detection of SR-BI in 25 µg of mouse liver lysate, using pab50090 at a 1/1 000 dilution, shows distinct band at 82 kDa



FACS analysis of Huh7 and HepG2 cells using pab50090
Courtesy of Bruno Saint-Jr., PhD, University of Illinois at Chicago

Image 3.

Please check the [product details page](#) for more images. Overall 6 images are available for ABIN363399.