

Datasheet for ABIN363426
anti-LIPG antibody (N-Term)



[Go to Product page](#)

2 Images

Overview

Quantity:	0.1 mL
Target:	LIPG
Binding Specificity:	N-Term
Reactivity:	Human
Host:	Rabbit
Clonality:	Polyclonal
Conjugate:	This LIPG antibody is un-conjugated
Application:	Western Blotting (WB)

Product Details

Immunogen:	An N-terminal synthetic peptide made to the human endothelial lipase protein sequence
Specificity:	Reacts with human ~57 kDa (mature, non-glycosylated form) and ~ 45 kDa (proteolytic form) of LIPG protein
Cross-Reactivity (Details):	Does not appear to react with murine protein. Not tested in other species.
Purification:	Purified

Target Details

Target:	LIPG
Alternative Name:	Endothelial Lipase (LIPG Products)

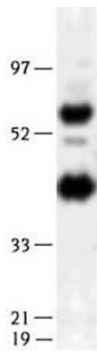
Application Details

Application Notes:	Working dilution: Optimal dilution should be determined by the end user. The following are guidelines only: - WB : 1/500
Restrictions:	For Research Use only

Handling

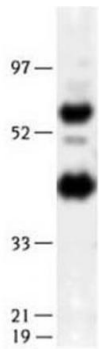
Format:	Liquid
Buffer:	, Sodium azide
Preservative:	Sodium azide
Precaution of Use:	This product contains Sodium azide: a POISONOUS AND HAZARDOUS SUBSTANCE which should be handled by trained staff only.
Storage:	4 °C
Storage Comment:	Store at 4°C. Do not freeze.

Images



Human endothelial lipase
detected in transfected
293 lysates using
pab50117 (MW 57 kD)

Image 1.



Human endothelial lipase
detected in transfected
293 lysates using
pab50117 (MW 57 kD)

Image 2.