

Datasheet for ABIN363428  
**anti-SYCP1 antibody (C-Term)**



[Go to Product page](#)

2 Images

## Overview

Quantity:	0.1 mL
Target:	SYCP1
Binding Specificity:	C-Term
Reactivity:	Mouse, Rat
Host:	Rabbit
Clonality:	Polyclonal
Conjugate:	This SYCP1 antibody is un-conjugated
Application:	Immunohistochemistry (Paraffin-embedded Sections) (IHC (p)), Immunofluorescence (IF), Immunohistochemistry (Frozen Sections) (IHC (fro))

## Product Details

Immunogen:	Synthetic peptide made to the C-terminus of the mouse SCP1 protein sequence
Specificity:	Reacts with mouse SYCP1 protein
Cross-Reactivity (Details):	Not tested on other species.
Purification:	Purified

## Target Details

Target:	SYCP1
Alternative Name:	Synaptonemal Complex Protein 1 (SCP1) ( <a href="#">SYCP1 Products</a> )

## Application Details

---

Application Notes: Working dilution: Optimal dilution should be determined by the end user.  
The following are guidelines only :  
- IF : 1/100 to 1/750 - IHC - (F or P) : 1/750

---

Restrictions: For Research Use only

---

## Handling

---

Format: Liquid

---

Storage: 4 °C

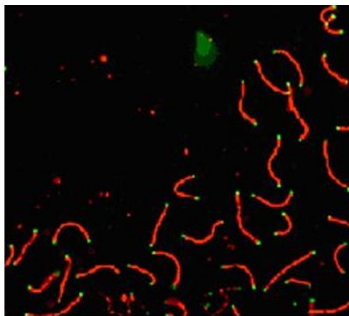
---

Storage Comment: Store at 4°C. Do not freeze.

---

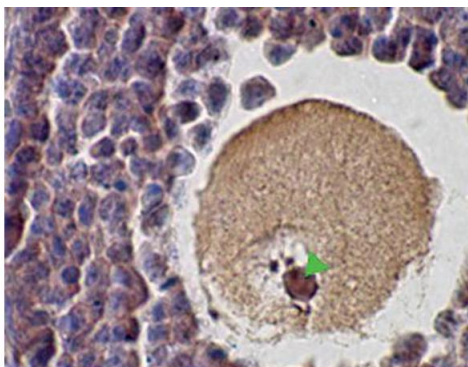
## Images

---



**SCP1 labeled in mouse pachytene preparation (red), using pab50119. CDK2 staining, near telomeres, is also present (green)**

**Image 1.**



**Punctate staining of murine SCP1 in mouse ovary using pab50119**

**Image 2.**