

Datasheet for ABIN363430
anti-SYCP3 antibody (C-Term)[Go to Product page](#)

2 Images

Overview

Quantity:	0.1 mL
Target:	SYCP3
Binding Specificity:	C-Term
Reactivity:	Mouse
Host:	Rabbit
Clonality:	Polyclonal
Application:	Immunofluorescence (IF), Immunohistochemistry (Paraffin-embedded Sections) (IHC (p)), Immunocytochemistry (ICC)

Product Details

Immunogen:	Synthetic peptide made to the C-terminal region of the mouse SCP3 protein
Specificity:	Reacts with mouse SYCP3 protein
Cross-Reactivity (Details):	Not tested on other species.
Purification:	Antigen affinity purified

Target Details

Target:	SYCP3
Alternative Name:	Synaptonemal Complex Protein 3 (SCP3) (SYCP3 Products)

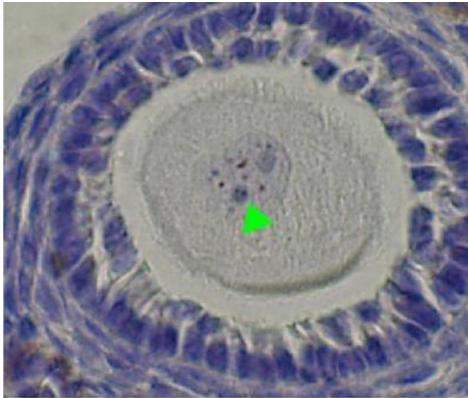
Application Details

Application Notes:	Working dilution: Optimal dilution should be determined by the end user. The following are guidelines only : - IF : 1/100 to 1/750 - IHC - P : 1/750
Restrictions:	For Research Use only

Handling

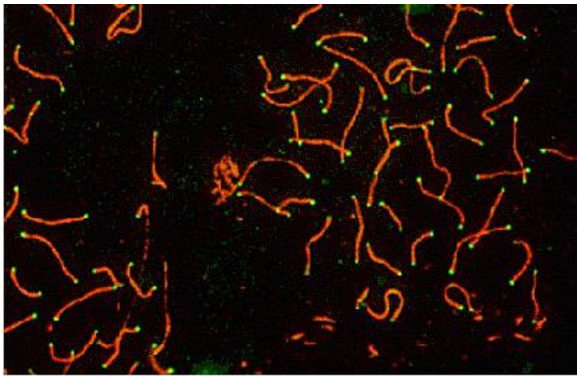
Format:	Liquid
Buffer:	PBS, Sodium azide 0.1 %
Preservative:	Sodium azide
Precaution of Use:	This product contains Sodium azide: a POISONOUS AND HAZARDOUS SUBSTANCE which should be handled by trained staff only.
Storage:	4 °C
Storage Comment:	Store at 4°C. Do not freeze.

Images



Punctate staining of murine SCP3 in mouse ovary using pab50121

Image 1.



SCP3 labeled in mouse pachytene preparation (red),
using pab50121. CDK2 staining, near telomeres,
is also present (green).

Image 2.