

Datasheet for ABIN363436
anti-DERL1 antibody (C-Term)



[Go to Product page](#)

2 Images

Overview

Quantity:	0.1 mL
Target:	DERL1
Binding Specificity:	AA 200-251, C-Term
Reactivity:	Human, Dog
Host:	Rabbit
Clonality:	Polyclonal
Conjugate:	This DERL1 antibody is un-conjugated
Application:	Western Blotting (WB), Immunohistochemistry (IHC)

Product Details

Immunogen:	Synthetic peptide made to the C-terminal region of the human Derlin-1 protein sequence (between residues 200-251)
Specificity:	Reacts with human 28 kDa Derlin-1
Cross-Reactivity:	Mouse (Murine), Cow (Bovine), Dog (Canine)
Cross-Reactivity (Details):	Cross reacts with canine protein. Not tested on other species. May cross react with Xenopus, bovine and mouse proteins due to sequence homology.
Purification:	Purified

Target Details

Target:	DERL1
---------	-------

Target Details

Alternative Name: Derlin-1 ([DERL1 Products](#))

Pathways: [ER-Nucleus Signaling](#)

Application Details

Application Notes: Working dilution: Optimal dilution should be determined by the end user.
The following are guidelines only:
- IHC : 5 to 10 µg/mL - WB : 1/1 000 to 1/5 000

Restrictions: For Research Use only

Handling

Format: Liquid

Concentration: 1 mg/mL

Buffer: , Sodium azide 0.1 %

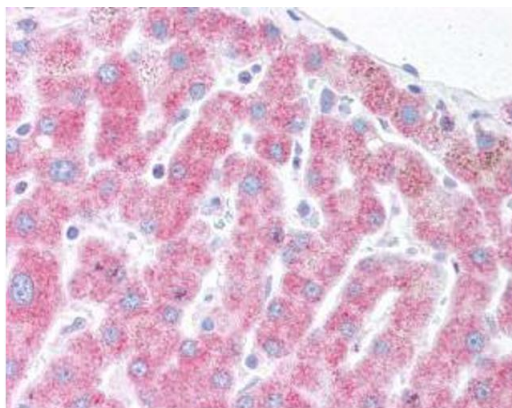
Preservative: Sodium azide

Precaution of Use: This product contains Sodium azide: a POISONOUS AND HAZARDOUS SUBSTANCE which should be handled by trained staff only.

Storage: 4 °C

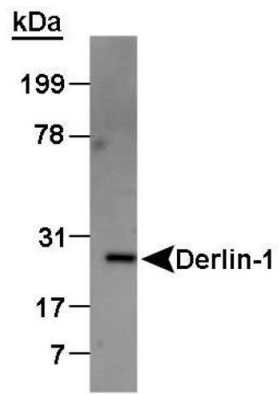
Storage Comment: Store at 4°C. Do not freeze.

Images



Staining of human liver using pab50127

Image 1.



Detection of Derlin protein in canine KRM microsomes using pab50127

Image 2.