

Datasheet for ABIN363437
anti-HIF1AN antibody (C-Term)



[Go to Product page](#)

2 Images

Overview

Quantity:	0.1 mL
Target:	HIF1AN
Binding Specificity:	C-Term
Reactivity:	Human, Mouse, Rat
Host:	Rabbit
Clonality:	Polyclonal
Conjugate:	This HIF1AN antibody is un-conjugated
Application:	Western Blotting (WB), Immunohistochemistry (IHC), Immunoprecipitation (IP)

Product Details

Immunogen:	Synthetic peptide derived from C-term domain of the human FIH protein (between residues 300 and the C-terminus).
Specificity:	Reacts with ~40 kDa FIH-1 from rat, human and mouse
Purification:	Antigen affinity purified

Target Details

Target:	HIF1AN
Alternative Name:	Hypoxia-Inducible Factor 1-alpha Inhibitor (HIF1AN Products)
Pathways:	Regulation of Muscle Cell Differentiation, Skeletal Muscle Fiber Development

Application Details

Application Notes: Working dilution: Optimal dilution should be determined by the end user.
The following are guidelines only :
- IHC : 1/100 - IP : 1/100 - WB : 1/1 000 to 1/5 000

Restrictions: For Research Use only

Handling

Format: Liquid

Buffer: Tris-citrate, phosphate, (pH 7-8) buffer, Sodium azide 0.1 %

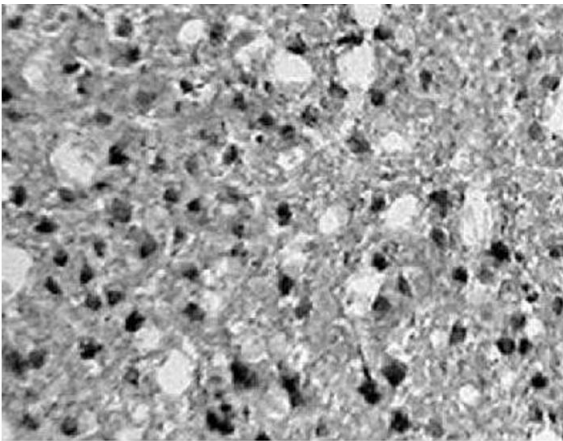
Preservative: Sodium azide

Precaution of Use: This product contains Sodium azide: a POISONOUS AND HAZARDOUS SUBSTANCE which should be handled by trained staff only.

Storage: 4 °C

Storage Comment: Store at 4°C. Do not freeze.

Images



Detection of FIH-1 in rat brain tissue, using pab50128 (1:100)

Image 1.

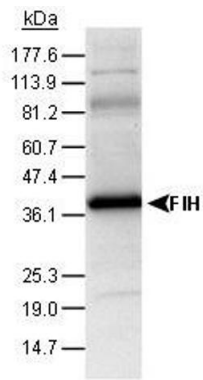


Image 2.

Detection of FIH-1 in rat and human samples,
using pab50128 (1:500)