



[Go to Product page](#)

Datasheet for ABIN363448

anti-FANCD2 antibody (pSer222)

2 Images

Overview

Quantity:	0.2 mL
Target:	FANCD2
Binding Specificity:	AA 217-226, pSer222
Reactivity:	Human
Host:	Rabbit
Clonality:	Polyclonal
Application:	Western Blotting (WB)

Product Details

Immunogen:	Synthetic peptide made to the human FANCD2 sequence (residues 217-226), surrounding a phosphorylated serine (222)
Specificity:	Reacts with human FANCD2 with a phosphorylation at serine 222
Purification:	Antiserum

Target Details

Target:	FANCD2
Alternative Name:	Fanconi anemia D2 (FANCD2 Products)
Pathways:	DNA Damage Repair

Application Details

Application Notes: Working dilution: Optimal dilution should be determined by the end user.
The following are guidelines only:
- WB : 1/400 (for PD20 FANCD2 overexpressing cells) - WB : 1/100 (for HeLa cells) - WB : 1/200 (for other cell types)

Restrictions: For Research Use only

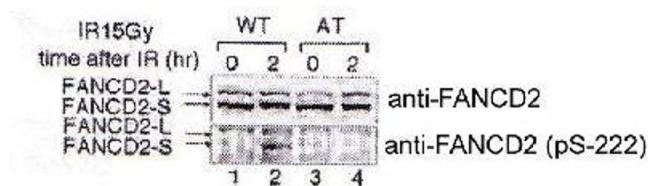
Handling

Format: Liquid

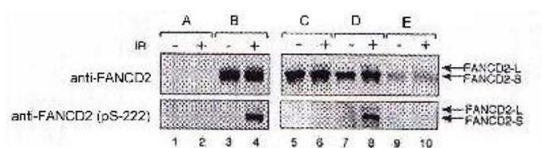
Storage: -20 °C/-80 °C

Storage Comment: Aliquot and store at -20°C or -80°C. Avoid freeze-thaw cycles.

Images



Indicated lymphoblasts (PD7, WT: GM1526, AT) were irradiated with 15 Gy (2), and immunoblotted with anti-FANCD2 and anti-FANCD2 (pS-222)



FA-D2 fibroblasts were stably transfected with either pMMP (empty vector, A), FANCD2 (wt, B), FANCD2 (S222A, C), FANCD2 (triple mutant, D), or FANCD2 (quadruple mutant, E). Cells were irradiated with 15 Gy(+), and whole cell lysates were immunoblotted with either anti-FANCD2 or anti-FANCD2 (pS-222)

Image 1.

Image 2.