

Datasheet for ABIN363450
anti-ABCG1 antibody (Internal Region)



[Go to Product page](#)

2 Images

Overview

Quantity:	0.1 mL
Target:	ABCG1
Binding Specificity:	AA 300-400, Internal Region
Reactivity:	Human, Mouse
Host:	Rabbit
Clonality:	Polyclonal
Conjugate:	This ABCG1 antibody is un-conjugated
Application:	Western Blotting (WB), Immunohistochemistry (IHC)

Product Details

Immunogen:	Synthetic peptide made to an internal region of human ABCG1 (between residues 300-400)
Specificity:	Reacts with human ~75 kDa ABCG1 proteib
Cross-Reactivity:	Mouse (Murine), Rat (Rattus)
Cross-Reactivity (Details):	Cross reacts with mouse (84 % /89 % sequence homology) protein and rat (78 %/88 %sequence homology).
Purification:	Antigen affinity purified

Target Details

Target:	ABCG1
Alternative Name:	ATP-Binding Cassette Sub-Family G Member 1) (ABCG1 Products)

Target Details

Pathways: [Lipid Metabolism](#)

Application Details

Application Notes: Working dilution: Optimal dilution should be determined by the end user.
The following are guidelines only :
- IHC : 1/100 to 1/1 000 - WB : 1/100 to 1/1 000

Restrictions: For Research Use only

Handling

Format: Liquid

Buffer: , Sodium azide

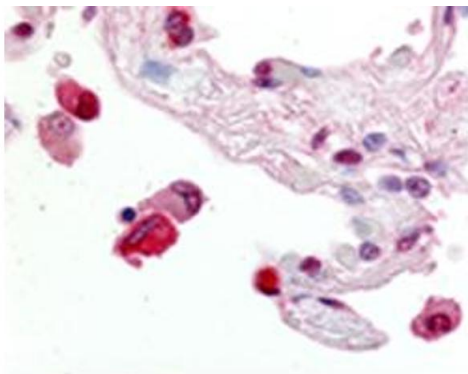
Preservative: Sodium azide

Precaution of Use: This product contains Sodium azide: a POISONOUS AND HAZARDOUS SUBSTANCE which should be handled by trained staff only.

Storage: 4 °C

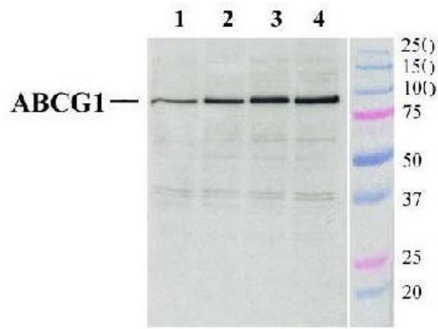
Storage Comment: Store at 4°C. Do not freeze.

Images



Staining of lung, alveolar macrophages using pab50141

Image 1.



Detection of ABCG1 in mouse peritoneal macrophages (40 μg), using pab50141

Lane 1: positive ABCG1 control

Lane 2: 10 μM 22-(R)-hydrocholesterol treated macrophages

Lane 3: 100 nM T0901713 (LXRa ligand) treated macrophages

Lane 4: 500 nM T091713 (LXRa ligand) treated macrophages

Image 2.