

Datasheet for ABIN363455
anti-DLX4 antibody (AA 1-60)



[Go to Product page](#)

2 Images

Overview

Quantity:	0.1 mL
Target:	DLX4
Binding Specificity:	AA 1-60
Reactivity:	Human
Host:	Rabbit
Clonality:	Polyclonal
Conjugate:	This DLX4 antibody is un-conjugated
Application:	Western Blotting (WB), Immunohistochemistry (IHC), Immunoprecipitation (IP)

Product Details

Immunogen:	Synthetic peptide made specifically to the human BP1 protein sequence (between residues 1-60)
Specificity:	Reacts with human ~26 kDa DLX-4 protein
Cross-Reactivity:	Mouse (Murine)
Cross-Reactivity (Details):	May cross reacts with mouse protein (82 % sequence homology).
Purification:	Antigen affinity purified

Target Details

Target:	DLX4
Alternative Name:	Homeobox Protein DLX-4 (DLX4 Products)

Application Details

Application Notes: Working dilution: Optimal dilution should be determined by the end user.
The following are guidelines only:
- IHC : 1/50 to 1/100 - IP : 1/50 to 1/100 - WB : 1/50 to 1/100

Restrictions: For Research Use only

Handling

Format: Liquid

Buffer: , Sodium azide 0.1 %

Preservative: Sodium azide

Precaution of Use: This product contains Sodium azide: a POISONOUS AND HAZARDOUS SUBSTANCE which should be handled by trained staff only.

Storage: 4 °C

Storage Comment: Store at 4°C. Do not freeze.

Images

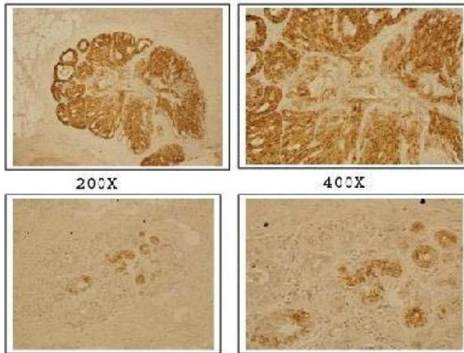


Image 1.

Lane 1: BP1-specific band (36kDa) from 10ug of cell extract
using anti-BP1 (pab50146) antibody diluted 1:5 000

Lane 2: BP1-specific band after immunoprecipitation of 850 ug of cell extract
using anti-BP1 (pab50146) antibody diluted 1:1 000

Lane 3: Negative control for IP in lane 2: cell extract incubated
with 50ul of Protein A/G beads



Top Panel: BP1 detected in breast cancer cells using pab50146
Bottom Panel: Staining of normal breast cancer cells using pab50146

Image 2.