

Datasheet for ABIN363463
anti-POT1 antibody (AA 200-300)



[Go to Product page](#)

1 Image

Overview

Quantity:	0.1 mL
Target:	POT1
Binding Specificity:	AA 200-300
Reactivity:	Human
Host:	Rabbit
Clonality:	Polyclonal
Conjugate:	This POT1 antibody is un-conjugated
Application:	Western Blotting (WB)

Product Details

Immunogen:	Synthetic peptide made to an internal portion of the human POT1 protein sequence (between residues 200-300)
Specificity:	Reacts with human POT1
Cross-Reactivity:	Mouse (Murine)
Cross-Reactivity (Details):	May cross react with human (100 % sequence homology), monkey (95 %), rat (82 %) and mouse protein (72 %).
Purification:	Purified

Target Details

Target:	POT1
---------	------

Target Details

Abstract: [POT1 Products](#)

Pathways: [Cell Division Cycle, Telomere Maintenance](#)

Application Details

Application Notes: Working dilution: Optimal dilution should be determined by the end user.
The following are guidelines only:
- WB : 1/500 to 1/2 000

Restrictions: For Research Use only

Handling

Format: Liquid

Buffer: Tris-glycine, NaCl 150 mM buffer, Sodium azide

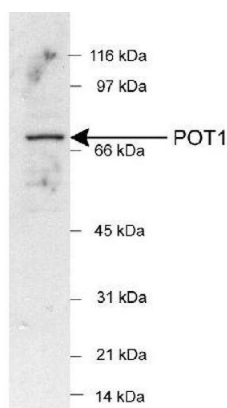
Preservative: Sodium azide

Precaution of Use: This product contains Sodium azide: a POISONOUS AND HAZARDOUS SUBSTANCE which should be handled by trained staff only.

Storage: 4 °C

Storage Comment: Store at 4°C. Do not freeze.

Images



Detection of POT1 in HeLa nuclear extracts (25 µg) using pab50154 (1/500)
ECL detection 1 min

Image 1.