

Datasheet for ABIN363472
anti-NSP5 antibody (AA 200-300)



[Go to Product page](#)

2 Images

Overview

Quantity:	0.1 mL
Target:	NSP5 (SPECC1)
Binding Specificity:	AA 200-300
Reactivity:	Human
Host:	Rabbit
Clonality:	Polyclonal
Conjugate:	This NSP5 antibody is un-conjugated
Application:	Western Blotting (WB)

Product Details

Immunogen:	Synthetic peptide made to the human NSP5a3a protein sequence (between residues 200-300)
Specificity:	Reacts with human NSP5a3a
Cross-Reactivity:	Mouse (Murine), Rat (Rattus)
Cross-Reactivity (Details):	May cross react with mouse (93 % sequence homology) and with rat protein (87 %).
Purification:	Antigen affinity purified

Target Details

Target:	NSP5 (SPECC1)
Abstract:	SPECC1 Products
Background:	NSP type 5alpha/3alpha is a novel structure protein that may play a role in nuclear function

Target Details

during cell division. It is also highly expressed in certain tumor cell lines, suggesting that it may serve as a good tumor marker.

Application Details

Application Notes: Working dilution: Optimal dilution should be determined by the end user.
The following are guidelines only :
- WB : 1/500 to 1/2 000

Restrictions: For Research Use only

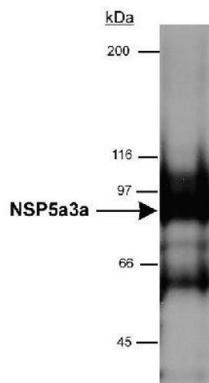
Handling

Format: Liquid

Storage: 4 °C

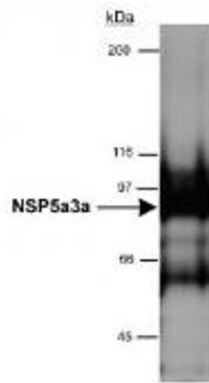
Storage Comment: Store at 4°C. Do not freeze.

Images



Detection of NSP5a3a in HeLa whole cell lysate (RIPA)
using pab50163 (0,5 µg/ml dilution)
15 second ECL detection

Image 1.



Detection of NSP5a3a in HeLa whole cell lysate (RIPA)
using pab50/63 (0,5 µg/ml dilution)
15 second ECL detection

Image 2.