



[Go to Product page](#)

Datasheet for ABIN363490
anti-Liver X Receptor antibody

1 Image

Overview

Quantity:	0.1 mL
Target:	Liver X Receptor (LXR)
Reactivity:	Human
Host:	Rabbit
Clonality:	Polyclonal
Conjugate:	This Liver X Receptor antibody is un-conjugated
Application:	Western Blotting (WB)

Product Details

Immunogen:	Synthetic peptide made to an internal portion of the human LXR protein sequence
Specificity:	Reacts with human LXR alpha and beta isoforms
Cross-Reactivity (Details):	Not tested in other species.
Purification:	Antigen affinity purified

Target Details

Target:	Liver X Receptor (LXR)
Abstract:	LXR Products

Application Details

Application Notes:	Working dilution: Optimal dilution should be determined by the end user.
--------------------	--

Application Details

The following are guidelines only:

- WB : 0.5 to 2 µg/mL

Restrictions: For Research Use only

Handling

Format: Liquid

Buffer: Tris-glycine, NaCl 150 mM buffer, Sodium azide 0.05 %

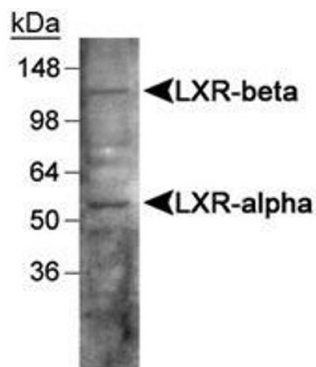
Preservative: Sodium azide

Precaution of Use: This product contains Sodium azide: a POISONOUS AND HAZARDOUS SUBSTANCE which should be handled by trained staff only.

Storage: 4 °C

Storage Comment: Store at 4°C. Do not freeze.

Images



Detection of LXR in human liver using pab50181

Image 1.