

Datasheet for ABIN363562  
**anti-ATP13A2 antibody (Internal Region)**



[Go to Product page](#)

2 Images

## Overview

Quantity:	0.1 mL
Target:	ATP13A2
Binding Specificity:	AA 200-300, Internal Region
Reactivity:	Human, Mouse
Host:	Rabbit
Clonality:	Polyclonal
Conjugate:	This ATP13A2 antibody is un-conjugated
Application:	Western Blotting (WB), Immunohistochemistry (IHC)

## Product Details

Immunogen:	Synthetic peptide within the internal region of residues 200-300 of the human ATP13A2 protein
Specificity:	Reacts with human and mouse ~129 kDa ATP13A2 protein
Purification:	Antigen affinity purified

## Target Details

Target:	ATP13A2
Alternative Name:	Probable Cation-Transporting ATPase 13A2 ( <a href="#">ATP13A2 Products</a> )
Pathways:	<a href="#">Ribonucleoside Biosynthetic Process</a>

## Application Details

---

Application Notes: Working dilution: Optimal dilution should be determined by the end user.  
The following are guidelines only:  
- IHC : 10 to 20 µg/mL - WB : 2 µg/mL

Restrictions: For Research Use only

## Handling

---

Format: Liquid

Concentration: 0.75 mg/mL

Buffer: Tris-glycine, NaCl 150 mM buffer, Sodium azide 0.05 %

Preservative: Sodium azide

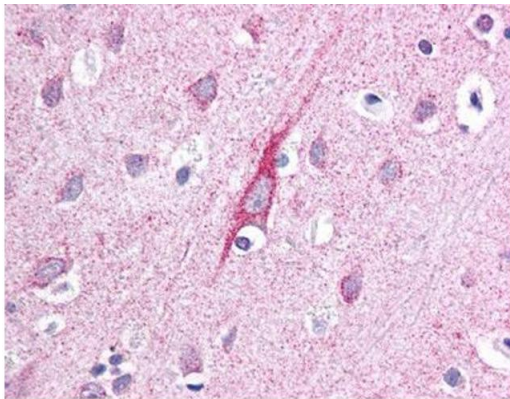
Precaution of Use: This product contains Sodium azide: a POISONOUS AND HAZARDOUS SUBSTANCE which should be handled by trained staff only.

Storage: -20 °C/-80 °C

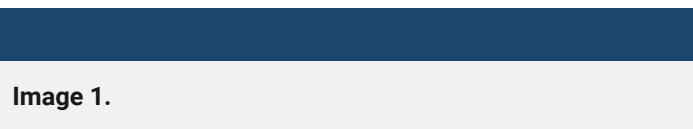
Storage Comment: Aliquot and store at -20°C or -80°C. Avoid freeze-thaw cycles.

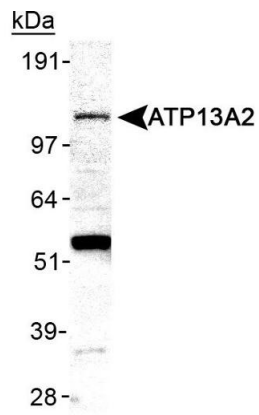
## Images

---



Staining of neurons and neuropils using pab50253 at 10 µg/ml  
Human brain, 40X





Detection of ATP13A2 in mouse  
brain membrane lysate using pab50253

Image 2.