

Datasheet for ABIN363569
anti-GPIHBP1 antibody (Internal Region)



[Go to Product page](#)

1 Image

Overview

Quantity:	0.1 mL
Target:	GPIHBP1
Binding Specificity:	AA 170-250, Internal Region
Reactivity:	Mouse
Host:	Rabbit
Clonality:	Polyclonal
Conjugate:	This GPIHBP1 antibody is un-conjugated
Application:	Western Blotting (WB)

Product Details

Immunogen:	Synthetic peptide within an internal region (residues 170-250) of the mouse GPI-anchored HDL-binding protein 1
Specificity:	Reacts with mouse Gpihbp1 protein
Cross-Reactivity (Details):	Not tested in other species
Purification:	Antigen affinity purified

Target Details

Target:	GPIHBP1
Alternative Name:	GPI-Anchored HDL-Binding Protein 1 (Gpihbp1) (GPIHBP1 Products)

Application Details

Application Notes: Working dilution: Optimal dilution should be determined by the end user.
The following are guidelines only:
- WB : 2 µg/mL

Restrictions: For Research Use only

Handling

Format: Liquid

Concentration: 0.9 mg/mL

Buffer: Tris-glycine, NaCl 150 mM buffer, Sodium azide 0.05 %

Preservative: Sodium azide

Precaution of Use: This product contains Sodium azide: a POISONOUS AND HAZARDOUS SUBSTANCE which should be handled by trained staff only.

Storage: -20 °C/-80 °C

Storage Comment: Aliquot and store at -20°C or -80°C. Avoid freeze-thaw cycles.

Images

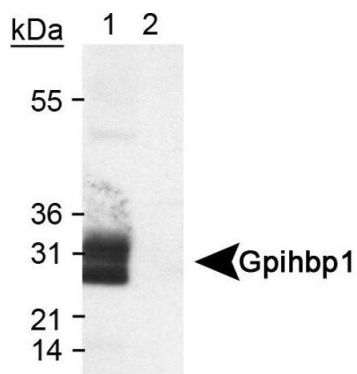


Image 1.

Detection of Gpihbp1 in transfected lysate (Lane 1) using pab50260
An empty vector lysate was used as a negative control (Lane 2)