

Datasheet for ABIN363578
anti-OPA1 antibody (Internal Region)



[Go to Product page](#)

2 Images

Overview

Quantity:	0.1 mL
Target:	OPA1
Binding Specificity:	AA 500-600, Internal Region
Reactivity:	Human, Mouse, Rat, Chicken
Host:	Rabbit
Clonality:	Polyclonal
Conjugate:	This OPA1 antibody is un-conjugated
Application:	Western Blotting (WB), Immunohistochemistry (IHC)

Product Details

Immunogen:	Synthetic peptide made to an internal region within residues 500-600 of the human protein
Specificity:	Reacts with OPA1 from human, mouse, rat and chicken
Cross-Reactivity (Details):	Predicted to react with primate based on 100 % sequence homology. Immunogen sequence has 94 % homology to Zebrafish.
Purification:	Antigen affinity purified

Target Details

Target:	OPA1
Alternative Name:	Optic Atrophy Protein 1 (Opa1) (OPA1 Products)
Gene ID:	4976

Target Details

Pathways: [Tube Formation](#)

Application Details

Application Notes: Working dilution: Optimal dilution should be determined by the end user.
The following are guidelines only:
- IHC : 2.5 µg/mL - WB : 2 µg/mL

Restrictions: For Research Use only

Handling

Format: Liquid

Concentration: 1.04 mg/mL

Buffer: Tris-glycine, NaCl 150 mM buffer, Sodium azide 0.05 %

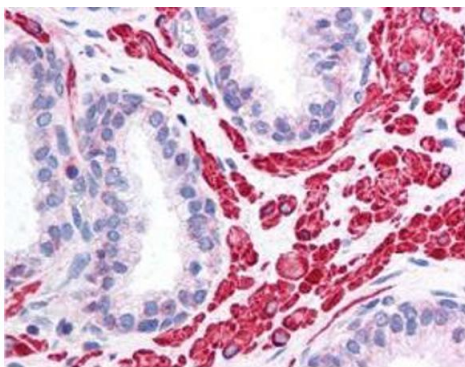
Preservative: Sodium azide

Precaution of Use: This product contains Sodium azide: a POISONOUS AND HAZARDOUS SUBSTANCE which should be handled by trained staff only.

Storage: -20 °C/-80 °C

Storage Comment: Aliquot and store at -20°C or -80°C. Avoid freeze-thaw cycles.

Images



**Staining in prostatic smooth muscle and glandular epithelium using pab50269
Human Prostate 40X magnification**

Image 1.

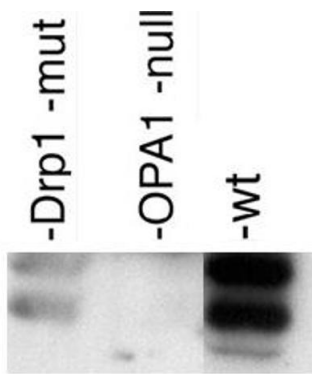


Image 2.

Detection of Opa-1 protein using pab50269 in post-nuclear extracts of mouse embryonic fibroblasts