

Datasheet for ABIN363586  
**anti-Lipin 1 antibody (Internal Region)**



[Go to Product page](#)

2 Images

## Overview

Quantity:	0.1 mL
Target:	Lipin 1 (LPIN1)
Binding Specificity:	AA 300-400, Internal Region
Reactivity:	Human, Mouse
Host:	Rabbit
Clonality:	Polyclonal
Conjugate:	This Lipin 1 antibody is un-conjugated
Application:	Western Blotting (WB)

## Product Details

Immunogen:	Synthetic peptide to an internal region (within residues 300-400) of the human LPIN1 protein
Specificity:	Reacts with human LPIN1
Cross-Reactivity:	Mouse (Murine)
Cross-Reactivity (Details):	Cross reacts with mouse protein. Not tested in other species.
Purification:	Antigen affinity purified

## Target Details

Target:	Lipin 1 (LPIN1)
Abstract:	<a href="#">LPIN1 Products</a>
Pathways:	<a href="#">Monocarboxylic Acid Catabolic Process</a>

## Application Details

---

Application Notes: Working dilution: Optimal dilution should be determined by the end user.  
The following are guidelines only:  
- WB : 1/100 to 1/1 000

---

Restrictions: For Research Use only

---

## Handling

---

Format: Liquid

---

Buffer: PBS, glycerol 30 % , Sodium azide 0.1 %

---

Preservative: Sodium azide

---

Precaution of Use: This product contains Sodium azide: a POISONOUS AND HAZARDOUS SUBSTANCE which should be handled by trained staff only.

---

Storage: -20 °C/-80 °C

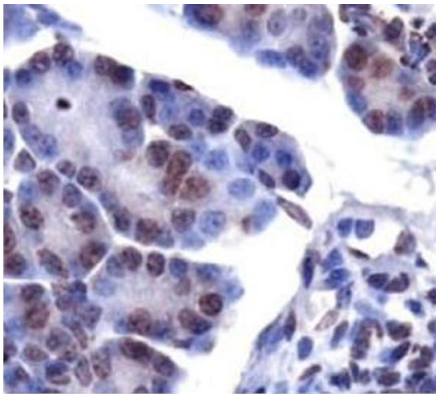
---

Storage Comment: Aliquot and store at -20°C or -80°C. Avoid freeze-thaw cycles.

---

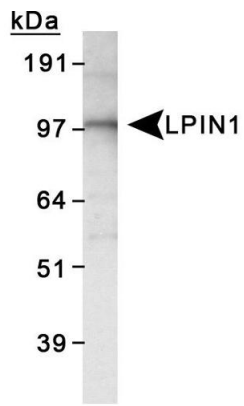
## Images

---



**Staining of LPIN1 in mouse pancreas using pab50277**

**Image 1.**



Detection of LPIN1 in 3T3 L1 lysate using pab50277

Image 2.