

Datasheet for ABIN363590  
**anti-CDR2 antibody (C-Term)**

2 Images



[Go to Product page](#)

## Overview

Quantity:	0.1 mL
Target:	CDR2
Binding Specificity:	C-Term
Reactivity:	Human, Mouse, Cow, Monkey
Host:	Rabbit
Clonality:	Polyclonal
Conjugate:	This CDR2 antibody is un-conjugated
Application:	Immunohistochemistry (IHC), Western Blotting (WB)

## Product Details

Immunogen:	Synthetic peptide made to a C-terminal region of the human protein
Specificity:	Reacts with ~51 kDa CDR2 protein from human, mouse, bovine, primate
Cross-Reactivity:	Rat (Rattus)
Cross-Reactivity (Details):	May cross react with rat (85 % sequence homology).
Purification:	Antigen affinity purified

## Target Details

Target:	CDR2
Alternative Name:	Cerebellar Degeneration-Related Protein 2 ( <a href="#">CDR2 Products</a> )

## Application Details

---

Application Notes: Working dilution: Optimal dilution should be determined by the end user.  
The following are guidelines only :  
- IHC : 5 to 10 µg/mL - WB : 2 µg/mL

Restrictions: For Research Use only

## Handling

---

Format: Liquid

Concentration: 1 mg/mL

Buffer: Tris-citrate, phosphate, ( pH 7-8) buffer, Sodium azide 0.1 %

Preservative: Sodium azide

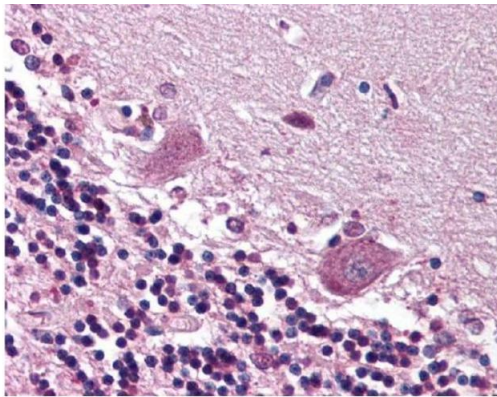
Precaution of Use: This product contains Sodium azide: a POISONOUS AND HAZARDOUS SUBSTANCE which should be handled by trained staff only.

Storage: -20 °C/-80 °C

Storage Comment: Aliquot and store at -20°C or -80°C. Avoid freeze-thaw cycles.

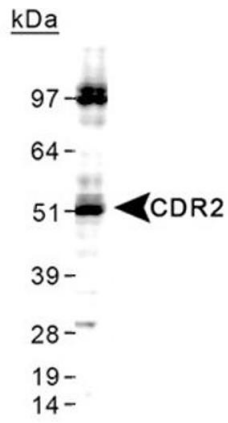
## Images

---



**Staining of CDR2 in Purkinje neurons  
of the cerebellum using pab50281**

**Image 1.**



Detection of CDR2 in HeLa whole cell lysate using pab50281

Image 2.