

Datasheet for ABIN363597
anti-ROBO4 antibody (Internal Region)



[Go to Product page](#)

2 Images

Overview

Quantity:	0.1 mL
Target:	ROBO4
Binding Specificity:	AA 200-300, Internal Region
Reactivity:	Human
Host:	Rabbit
Clonality:	Polyclonal
Conjugate:	This ROBO4 antibody is un-conjugated
Application:	Western Blotting (WB), Immunohistochemistry (Paraffin-embedded Sections) (IHC (p))

Product Details

Immunogen:	Synthetic peptide made to an internal region of the human protein (within residues 200-300)
Specificity:	Reacts with the 85 kDa and 107 kDa isoforms of the ROBO4 human protein
Cross-Reactivity (Details):	Not tested in other species
Purification:	Antigen affinity purified

Target Details

Target:	ROBO4
Alternative Name:	Roundabout Homolog 4 (ROBO4) (ROBO4 Products)
Background:	Roundabouts (ROBO) are cell-surface receptors that mediate repulsive signaling mechanisms at the central nervous system midline. However, ROBOs may also mediate attraction

Target Details

mechanisms in the context of vascular development. ROBO4 is a novel roundabout protein which is restricted in expression to endothelial cells in vitro and sites of angiogenesis in vivo. Because it is not expressed on normal endothelial cells, in vivo, it is a promising tumor endothelial marker.

Gene ID: 54538

Application Details

Application Notes: Working dilution: Optimal dilution should be determined by the end user.
The following are guidelines only:
- IHC - P : 5 µg/mL - WB : 1/500

Restrictions: For Research Use only

Handling

Format: Liquid

Concentration: 1.09 mg/mL

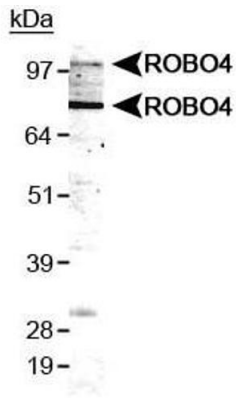
Buffer: Tris-citrate, phosphate, (pH 7-8) buffer, Sodium azide 0.1 %

Preservative: Sodium azide

Precaution of Use: This product contains Sodium azide: a POISONOUS AND HAZARDOUS SUBSTANCE which should be handled by trained staff only.

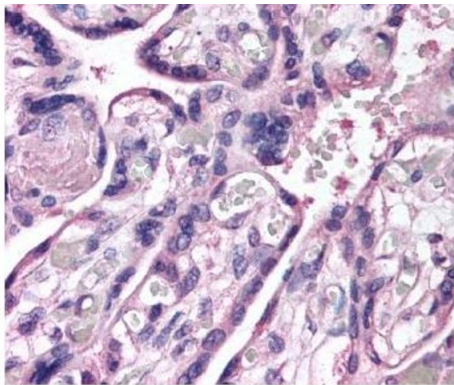
Storage: 4 °C

Storage Comment: Store at 4°C. Do not freeze.



Detection of ROBO4 in HUVEC lysate using pab50288

Image 1.



Detection of ROBO4 in endothelium and trophoblasts of the placenta using pab50288

Image 2.