



[Go to Product page](#)

Datasheet for ABIN363598

## anti-ROBO4 antibody (C-Term)

### 2 Images

#### Overview

Quantity:	0.1 mL
Target:	ROBO4
Binding Specificity:	AA 900-1007, C-Term
Reactivity:	Human
Host:	Rabbit
Clonality:	Polyclonal
Application:	Western Blotting (WB), Immunohistochemistry (Paraffin-embedded Sections) (IHC (p)), Immunofluorescence (IF), Immunocytochemistry (ICC)

#### Product Details

Immunogen:	Synthetic peptide made to a C-terminal region of the human protein (within residues 900-1007)
Specificity:	Reacts with the 85 kDa and 107 kDa isoforms of the ROBO4 human protein
Cross-Reactivity (Details):	Not tested in other species.
Purification:	Antigen affinity purified

#### Target Details

Target:	ROBO4
Alternative Name:	Roundabout Homolog 4 (ROBO4) ( <a href="#">ROBO4 Products</a> )
Gene ID:	54538

## Application Details

Application Notes: Working dilution: Optimal dilution should be determined by the end user.  
The following are guidelines only:  
IHC - P5 µg/mL WB1:500

Restrictions: For Research Use only

## Handling

Format: Liquid

Concentration: 1 mg/mL

Buffer: Tris-citrate, phosphate, (pH 7-8) buffer, Sodium azide 0.1 %

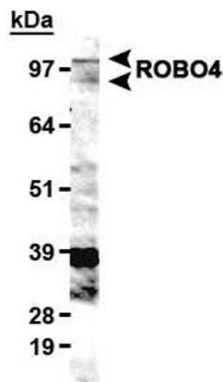
Preservative: Sodium azide

Precaution of Use: This product contains Sodium azide: a POISONOUS AND HAZARDOUS SUBSTANCE which should be handled by trained staff only.

Storage: 4 °C

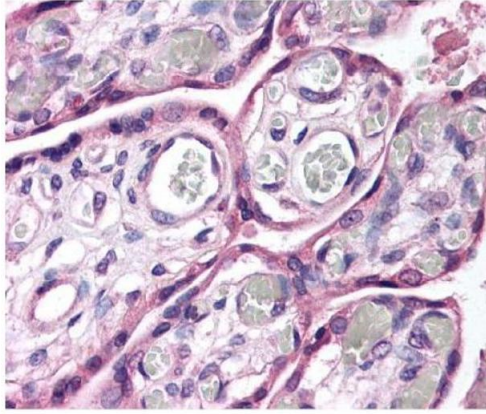
Storage Comment: Store at 4°C. Do not freeze.

## Images



Detection of ROBO4 in HUVEC  
lysate using pab50289

Image 1.



Detection of ROBO4 in human placental epithelial cells and trophoblasts using pab50289

Image 2.