

Datasheet for ABIN363600

anti-Spectrin, Beta, Non-erythrocytic 2 (SPTBN2) (AA 2300-2390), (C-Term) antibody[Go to Product page](#)**2** Images

Overview

Quantity:	0.1 mL
Target:	Spectrin, Beta, Non-erythrocytic 2 (SPTBN2)
Binding Specificity:	AA 2300-2390, C-Term
Reactivity:	Human
Host:	Rabbit
Clonality:	Polyclonal
Conjugate:	Un-conjugated
Application:	Western Blotting (WB), Immunohistochemistry (IHC), Immunoprecipitation (IP)

Product Details

Immunogen:	The epitope recognized by this antibody maps to a C-terminal region between residue 2300 and 2390 of human spectrin, beta, non-erythrocytic 2 (spinocerebellar ataxia 5)
Specificity:	Reacts with human SPTBN2 protein
Cross-Reactivity:	Mouse (Murine)
Cross-Reactivity (Details):	Cross reacts with mouse and rat. Not tested in other species.
Purification:	Antigen affinity purified

Target Details

Target:	Spectrin, Beta, Non-erythrocytic 2 (SPTBN2)
Abstract:	SPTBN2 Products

Target Details

Pathways: [Regulation of Actin Filament Polymerization, Synaptic Vesicle Exocytosis](#)

Application Details

Application Notes: Working dilution: Optimal dilution should be determined by the end user.
The following are guidelines only :
- IHC : 10 to 20 µg/mL - IP : 2 to 5 µg/mg lysate - WB : 1/2 000 to 1/10 000

Restrictions: For Research Use only

Handling

Format: Liquid

Buffer: Tris-citrate, phosphate, (pH 7-8) buffer, Sodium azide 0.09 %

Preservative: Sodium azide

Precaution of Use: This product contains Sodium azide: a POISONOUS AND HAZARDOUS SUBSTANCE which should be handled by trained staff only.

Storage: 4 °C

Storage Comment: Store at 4°C. Do not freeze.

Images

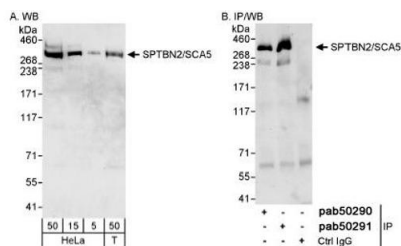


Image 1.

Detection of Human SPTBN2/SCA5 by Western Blot and Immunoprecipitation

Samples: Whole cell lysate from HeLa(5, 15 and 50 mcg for

WB; 1 mg for IP, 20% of IP loaded) and 293T (T: 50 mcg) cells.

Antibodies: Affinity purified rabbit anti-SPTBN2/SCA5

antibody pab50291 used for WB at 0.04

mcg/ml (A) and 1 mcg/ml (B) and used for IP at 3 mcg/mg

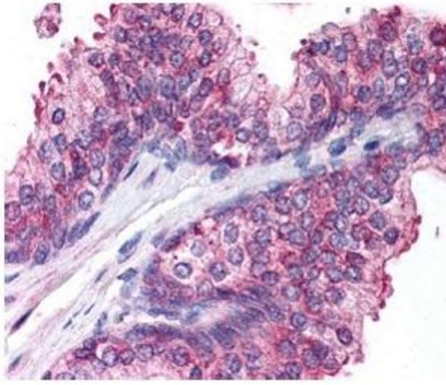
lysate. SPTBN2/SCA5 was also immunoprecipitated by rabbit

anti-SPTBN2/SCA5 antibody pab50290, which recognizes an

upstream epitope.

Detection: Chemiluminescence with

exposure times of 10 seconds (A) and 30 seconds (B)



Detection of Spectrin Beta III in human prostate epithelium using pab50291

Image 2.